

RGS14 antibody

Product Information

Catalog No.:	FNab07266
Size:	100µg
Form:	liquid
Purification:	Immunogen affinity purified
Purity:	≥95% as determined by SDS-PAGE
Host:	Rabbit
Clonality:	polyclonal
Clone ID:	None
IsoType:	IgG
Storage:	PBS with 0.02% sodium azide and 50% glycerol pH 7.3, -20°C for 12 months(Avoid repeated freeze / thaw cycles.)

Background

Regulates G protein-coupled receptor signaling cascades. Inhibits signal transduction by increasing the GTPase activity of G protein alpha subunits, thereby driving them into their inactive GDP-bound form. Besides, modulates signal transduction via G protein alpha subunits by functioning as a GDP-dissociation inhibitor(GDI). Has GDI activity on G(i) alpha subunits GNAI1 and GNAI3, but not on GNAI2 and G(o) alpha subunit GNAO1. Has GAP activity on GNAI0, GNAI2 and GNAI3. May act as a scaffold integrating G protein and Ras/Raf MAPkinase signaling pathways. Inhibits platelet-derived growth factor(PDGF)-stimulated ERK1/ERK2 phosphorylation; a process depending on its interaction with HRAS and that is reversed by G(i) alpha subunit GNAI1. Acts as a positive modulator of microtubule polymerisation and spindle organization through a G(i)-alpha-dependent mechanism. Plays a role in cell division. Required for the nerve growth factor(NGF)-mediated neurite outgrowth. Involved in stress resistance. May be involved in visual memory processing capacity and hippocampal-based learning and memory.

Immunogen information

Immunogen:	regulator of G-protein signaling 14
Synonyms:	Regulator of G-protein signaling 14 (RGS14) RGS14
Observed MW:	60-65 kDa
Uniprot ID :	O43566

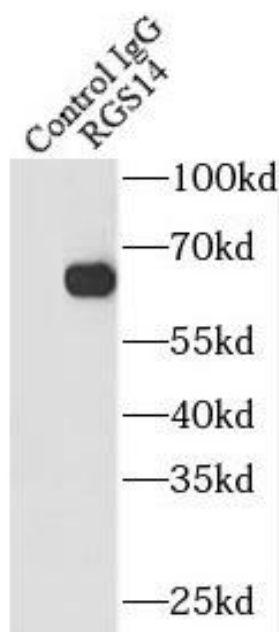
Application

Reactivity: Human, Mouse, Rat

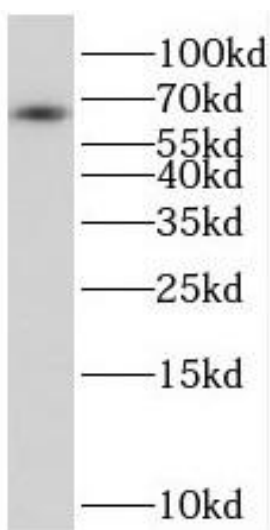
Tested Application: ELISA, WB, IP

Recommended dilution: WB: 1:500-1:2000; IP: 1:200-1:2000

Image:



IP Result of anti-RGS14 (IP:FNab07266, 3ug;
Detection:FNab07266 1:1000) with mouse brain
tissue lysate 5000ug.



mouse brain tissue were subjected to SDS PAGE
followed by western blot with FNab07266(RGS14
antibody) at dilution of 1:1500