

RFC4 antibody

Product Information

| | |
|---------------|---|
| Catalog No.: | FNab07250 |
| Size: | 100µg |
| Form: | liquid |
| Purification: | Immunogen affinity purified |
| Purity: | ≥95% as determined by SDS-PAGE |
| Host: | Rabbit |
| Clonality: | polyclonal |
| Clone ID: | None |
| IsoType: | IgG |
| Storage: | PBS with 0.02% sodium azide and 50% glycerol pH 7.3, -20°C for 12 months (Avoid repeated freeze / thaw cycles.) |

Background

The elongation of primed DNA templates by DNA polymerase delta and DNA polymerase epsilon requires the accessory proteins proliferating cell nuclear antigen (PCNA) and replication factor C (RFC). RFC, also named activator 1, is a protein complex consisting of five distinct subunits of 140, 40, 38, 37, and 36 kD. This gene encodes the 37 kD subunit. This subunit forms a core complex with the 36 and 40 kDa subunits. The core complex possesses DNA-dependent ATPase activity, which was found to be stimulated by PCNA in an in vitro system. Alternatively spliced transcript variants encoding the same protein have been reported.

Immunogen information

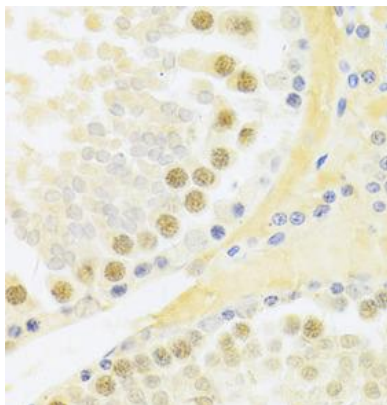
| | |
|--------------|---|
| Immunogen: | replication factor C (activator 1) 4, 37kDa |
| Synonyms: | Replication factor C subunit 4 Activator 1 37 kDa subunit (A1 37 kDa subunit) Activator 1 subunit 4 Replication factor C 37 kDa subunit (RF-C 37 kDa subunit, RFC37) RFC4 |
| Observed MW: | 38 kDa |
| Uniprot ID : | P35249 |

Application

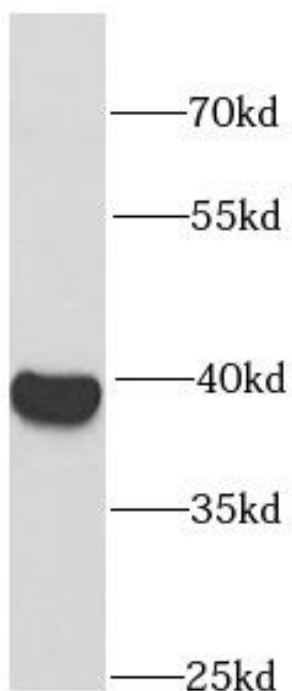
| | |
|---------------------|------------------------|
| Reactivity: | Human, Rat |
| Tested Application: | ELISA, WB, IHC, IF, IP |

Recommended dilution: WB: 1:500 - 1:2000; IHC: 1:50 - 1:200; IF: 1:50 - 1:100; IP: 1:50 - 1:200

Image:



Immunohistochemistry of paraffin-embedded rat testis using FNab07250(RFC4 antibody) at dilution of 1:100



HeLa cells were subjected to SDS PAGE followed by western blot with FNab07250(RFC4 antibody) at dilution of 1:1000