

## REPS2 antibody

### Product Information

Catalog No.:	FNab07242
Size:	100µg
Form:	liquid
Purification:	Immunogen affinity purified
Purity:	≥95% as determined by SDS-PAGE
Host:	Rabbit
Clonality:	polyclonal
Clone ID:	None
IsoType:	IgG
Storage:	PBS with 0.02% sodium azide and 50% glycerol pH 7.3, -20°C for 12 months(Avoid repeated freeze / thaw cycles.)

### Background

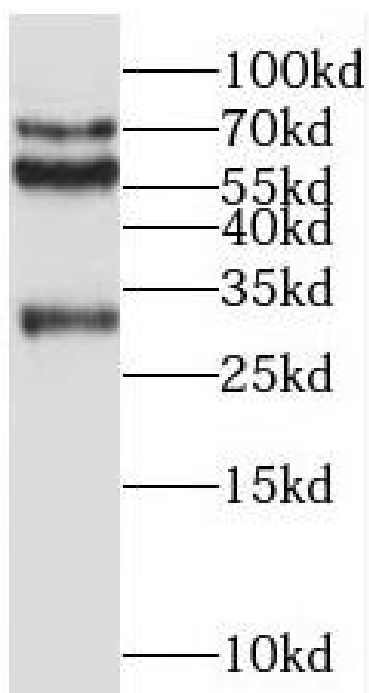
Involved in growth factor signaling through its influence on the Ral signaling pathway.

### Immunogen information

Immunogen:	RALBP1 associated Eps domain containing 2
Synonyms:	RalBP1-associated Eps domain-containing protein 2 Partner of RalBP1 RalBP1-interacting protein 2 REPS2 POB1
Observed MW:	72 kDa, 55 kDa, 30 kDa
Uniprot ID :	Q8NFH8

### Application

Reactivity:	Human, Mouse
Tested Application:	ELISA, WB, IF
Recommended dilution:	WB: 1:500-1:2000; IF: 1:20-1:200
Image:	



mouse brain tissue were subjected to SDS PAGE followed by western blot with FNab07242(REPS2 antibody) at dilution of 1:300