

REM2 antibody

Product Information

Catalog No.:	FNab07237
Size:	100µg
Form:	liquid
Purification:	Immunogen affinity purified
Purity:	≥95% as determined by SDS-PAGE
Host:	Rabbit
Clonality:	polyclonal
Clone ID:	None
IsoType:	IgG
Storage:	PBS with 0.02% sodium azide and 50% glycerol pH 7.3, -20°C for 12 months(Avoid repeated freeze / thaw cycles.)

Background

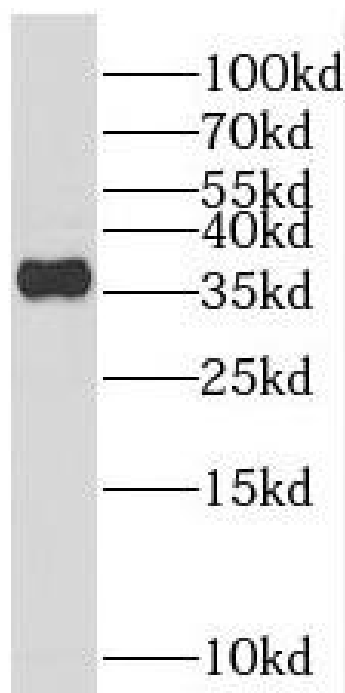
Binds GTP saturably and exhibits a low intrinsic rate of GTP hydrolysis.

Immunogen information

Immunogen:	RAS(RAD and GEM)-like GTP binding 2
Synonyms:	GTP-binding protein REM 2 Rad and Gem-like GTP-binding protein 2 REM2
Observed MW:	37 kDa
Uniprot ID :	Q8IYK8

Application

Reactivity:	Human
Tested Application:	ELISA, WB
Recommended dilution:	WB: 1:500-1:2000
Image:	



fetal human brain tissue were subjected to SDS PAGE followed by western blot with FNab07237(REM2 Antibody) at dilution of 1:1000