

RELB antibody

Product Information

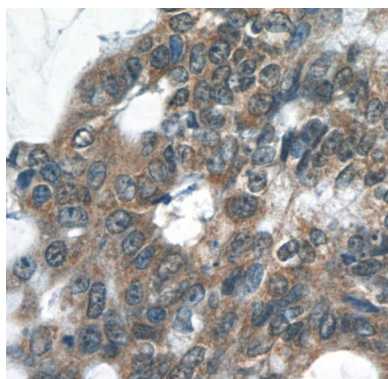
Catalog No.:	FNab07234
Size:	100µg
Form:	liquid
Purification:	Immunogen affinity purified
Purity:	≥95% as determined by SDS-PAGE
Host:	Rabbit
Clonality:	polyclonal
Clone ID:	None
IsoType:	IgG
Storage:	PBS with 0.02% sodium azide and 50% glycerol pH 7.3, -20°C for 12 months(Avoid repeated freeze / thaw cycles.)

Immunogen information

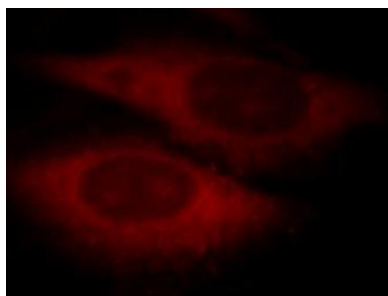
Immunogen:	v-rel reticuloendotheliosis viral oncogene homolog B
Synonyms:	Transcription factor RelB I-Rel RELB
Observed MW:	62 kDa
Uniprot ID :	Q01201

Application

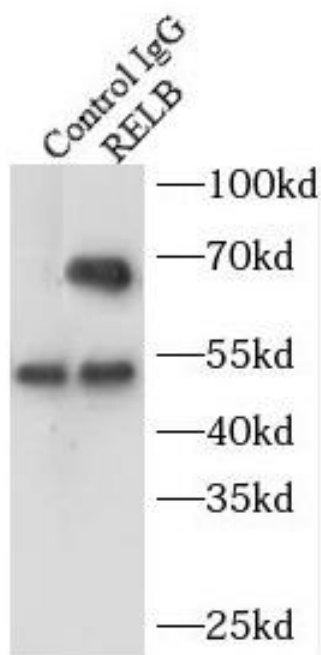
Reactivity:	Human
Tested Application:	ELISA, IF, IHC, IP, WB
Recommended dilution:	WB: 1:500-1:5000; IP: 1:200-1:1000; IHC: 1:20-1:200; IF: 1:10-1:100
Image:	



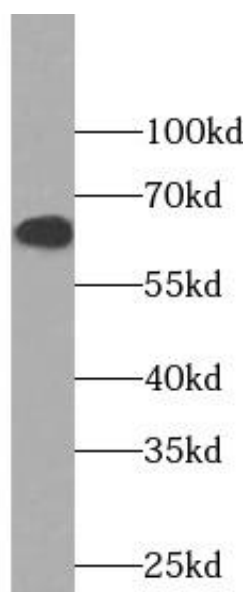
Immunohistochemistry of paraffin-embedded human colon cancer tissue slide using FNab07234(RELB Antibody) at dilution of 1:50



Immunofluorescent analysis of HeLa cells using FNab07234 (RELB Antibody) at dilution of 1:25 and Rhodamine-Goat anti-Rabbit IgG



IP Result of anti-RELB (IP:FNab07234, 3ug; Detection:FNab07234 1:300) with Raji cells lysate 2500ug.



Raji cells were subjected to SDS PAGE followed by western blot with FNab07234(RELB Antibody) at dilution of 1:1000