

## REEP1 antibody

### Product Information

Catalog No.:	FNab07229
Size:	100µg
Form:	liquid
Purification:	Immunogen affinity purified
Purity:	≥95% as determined by SDS-PAGE
Host:	Rabbit
Clonality:	polyclonal
Clone ID:	None
IsoType:	IgG
Storage:	PBS with 0.02% sodium azide and 50% glycerol pH 7.3, -20°C for 12 months(Avoid repeated freeze / thaw cycles.)

### Background

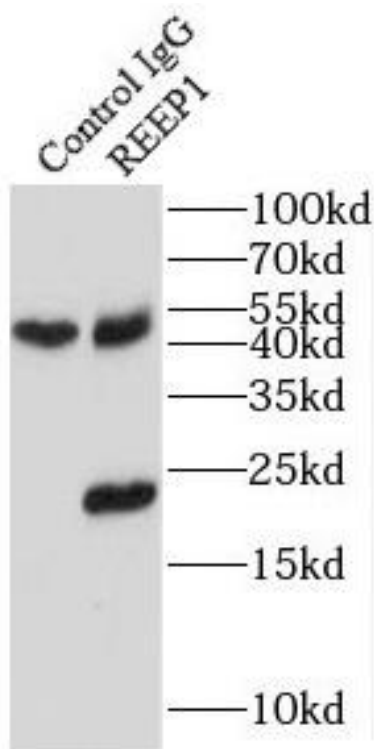
Required for endoplasmic reticulum(ER) network formation, shaping and remodeling; it links ER tubules to the cytoskeleton. May also enhance the cell surface expression of odorant receptors(PubMed:20200447). May play a role in long-term axonal maintenance(PubMed:24478229).

### Immunogen information

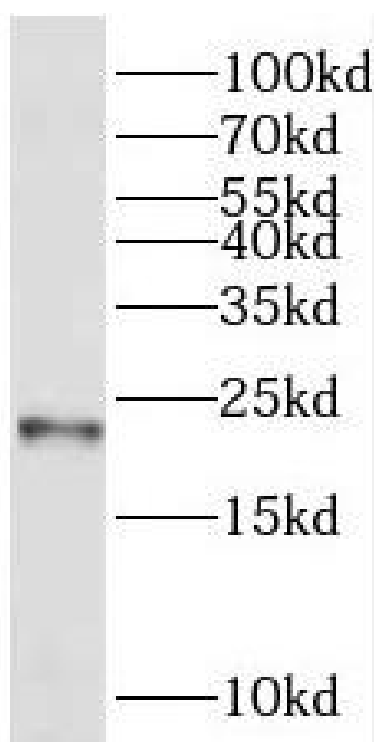
Immunogen:	receptor accessory protein 1
Synonyms:	Receptor expression-enhancing protein 1 Spastic paraplegia 31 protein REEP1 C2orf23 SPG31
Observed MW:	22 kDa
Uniprot ID :	Q9H902

### Application

Reactivity:	Human, Mouse, Rat
Tested Application:	ELISA, WB, IP
Recommended dilution:	WB: 1:500-1:2000; IP: 1:200-1:2000
Image:	



IP Result of anti-REEP1 (IP:FNab07229, 3ug;  
Detection:FNab07229 1:500) with mouse brain  
tissue lysate 4000ug.



rat brain tissue were subjected to SDS PAGE  
followed by western blot with FNab07229(REEP1  
antibody) at dilution of 1:500