

RECQL5 antibody

Product Information

| | |
|---------------|--|
| Catalog No.: | FNab07227 |
| Size: | 100µg |
| Form: | liquid |
| Purification: | Immunogen affinity purified |
| Purity: | ≥95% as determined by SDS-PAGE |
| Host: | Rabbit |
| Clonality: | polyclonal |
| Clone ID: | None |
| IsoType: | IgG |
| Storage: | PBS with 0.02% sodium azide and 50% glycerol pH 7.3, -20°C for 12 months(Avoid repeated freeze / thaw cycles.) |

Background

Isoform beta is a DNA helicase that plays an important role in DNA replication, transcription and repair. Inhibits elongation of stalled transcripts at DNA damage sites by binding to the RNA polymerase II subunit POLR2A and blocking the TCEA1 binding site. Required for mitotic chromosome separation after cross-over events and cell cycle progress. Required for efficient DNA repair, including repair of inter-strand cross-links. Stimulates DNA decatenation mediated by TOP2A. Prevents sister chromatid exchange and homologous recombination.

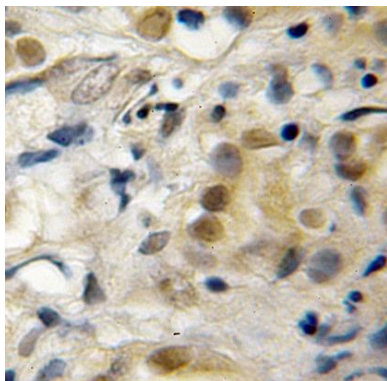
Immunogen information

| | |
|--------------|---|
| Immunogen: | RecQ protein-like 5 |
| Synonyms: | ATP-dependent DNA helicase Q5 DNA helicase, RecQ-like type 5 (RecQ5) RecQ protein-like 5 RECQL5 RECQ5 |
| Observed MW: | 50-60 kDa |
| Uniprot ID : | O94762 |

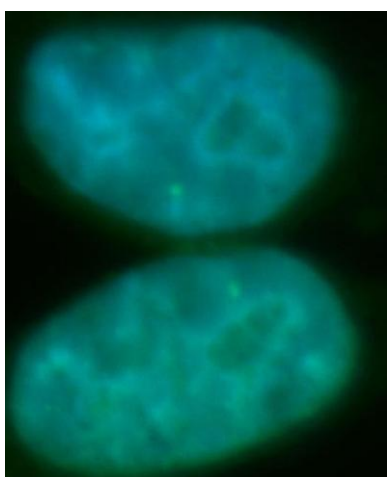
Application

| | |
|-----------------------|---|
| Reactivity: | Human, Mouse, Rat |
| Tested Application: | ELISA, WB, IHC, IF |
| Recommended dilution: | WB: 1:500-1:2000; IHC: 1:20-1:200; IF: 1:20-1:200 |

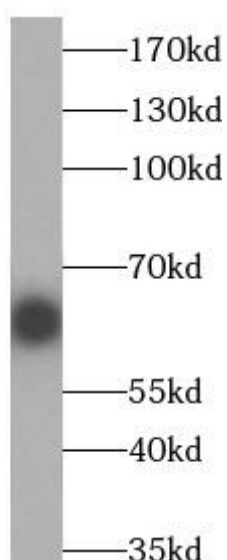
Image:



Immunohistochemistry of paraffin-embedded human pancreas cancer using FNab07227(RECQL5 antibody) at dilution of 1:50



Immunofluorescent analysis of HepG2 cells, using RECQL5 antibody FNab07227 at 1:100 dilution and FITC-labeled donkey anti-rabbit IgG(green). Blue pseudocolor = DAPI (fluorescent DNA dye).



mouse testis tissue were subjected to SDS PAGE followed by western blot with FNab07227(RECQL5 antibody) at dilution of 1:1000