

RCVRN antibody

Product Information

Catalog No.:	FNab07225
Size:	100µg
Form:	liquid
Purification:	Immunogen affinity purified
Purity:	≥95% as determined by SDS-PAGE
Host:	Rabbit
Clonality:	polyclonal
Clone ID:	None
IsoType:	IgG
Storage:	PBS with 0.02% sodium azide and 50% glycerol pH 7.3, -20°C for 12 months (Avoid repeated freeze / thaw cycles.)

Background

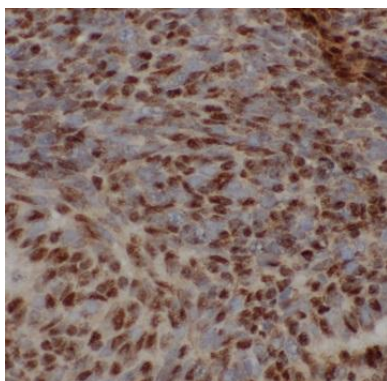
This gene encodes a member of the recoverin family of neuronal calcium sensors. The encoded protein contains three calcium-binding EF-hand domains and may prolong the termination of the phototransduction cascade in the retina by blocking the phosphorylation of photo-activated rhodopsin. Recoverin may be the antigen responsible for cancer-associated retinopathy.

Immunogen information

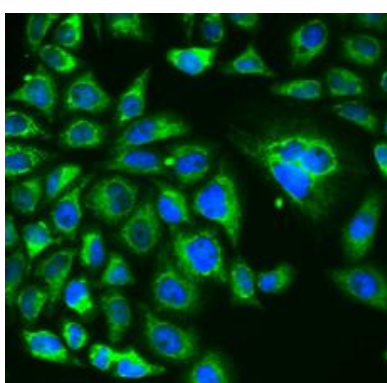
Immunogen:	recoverin
Synonyms:	Recoverin Cancer-associated retinopathy protein (Protein CAR) RCVRN RCV1
Observed MW:	23 kDa
Uniprot ID :	P35243

Application

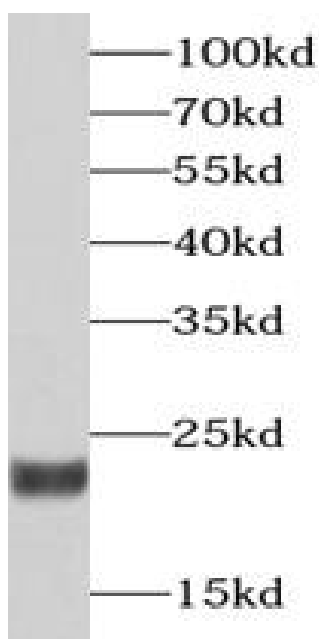
Reactivity:	Human, Mouse, Rat
Tested Application:	ELISA, WB, IHC, IF
Recommended dilution:	WB: 1:500 - 1:2000; IHC: 1:50 - 1:200; IF: 1:10 - 1:100
Image:	



Immunohistochemistry of paraffin-embedded human liver cancer using FNab07225(Recoverin antibody) at dilution of 1:50



Immunofluorescence analysis of MCF-7 cells using FNab07225(RCVRN antibody). Blue: DAPI for nuclear staining.



mouse eye tissue were subjected to SDS PAGE followed by western blot with FNab07225(RCVRN antibody) at dilution of 1:1000