

## RCN2 antibody

### Product Information

Catalog No.:	FNab07212
Size:	100µg
Form:	liquid
Purification:	Immunogen affinity purified
Purity:	≥95% as determined by SDS-PAGE
Host:	Rabbit
Clonality:	polyclonal
Clone ID:	None
IsoType:	IgG
Storage:	PBS with 0.02% sodium azide and 50% glycerol pH 7.3, -20°C for 12 months (Avoid repeated freeze / thaw cycles.)

### Background

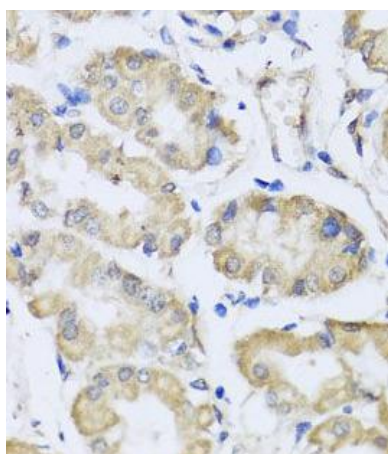
The protein encoded by this gene is a calcium-binding protein located in the lumen of the ER. The protein contains six conserved regions with similarity to a high affinity Ca(+2)-binding motif, the EF-hand. This gene maps to the same region as type 4 Bardet-Biedl syndrome, suggesting a possible causative role for this gene in the disorder. Alternatively spliced transcript variants encoding different isoforms have been found for this gene.

### Immunogen information

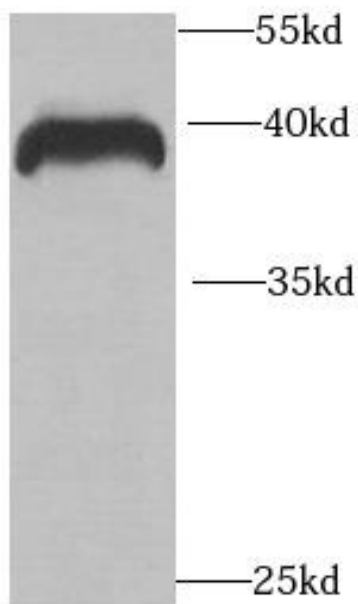
Immunogen:	reticulocalbin 2, EF-hand calcium binding domain
Synonyms:	Reticulocalbin-2 Calcium-binding protein ERC-55 E6-binding protein (E6BP) RCN2 ERC55
Observed MW:	37 kDa
Uniprot ID :	Q14257

### Application

Reactivity:	Human, Mouse, Rat
Tested Application:	ELISA, WB, IHC
Recommended dilution:	WB: 1:500 - 1:2000; IHC: 1:50 - 1:200
Image:	



Immunohistochemistry of paraffin-embedded human stomach using FNab07212(RCN2 antibody) at dilution of 1:50



human brain tissue were subjected to SDS PAGE followed by western blot with FNab07212(RCN2 antibody) at dilution of 1:1000