

## RCL1 antibody

### Product Information

Catalog No.:	FNab07211
Size:	100µg
Form:	liquid
Purification:	Immunogen affinity purified
Purity:	≥95% as determined by SDS-PAGE
Host:	Rabbit
Clonality:	polyclonal
Clone ID:	None
IsoType:	IgG
Storage:	PBS with 0.02% sodium azide and 50% glycerol pH 7.3, -20°C for 12 months(Avoid repeated freeze / thaw cycles.)

### Background

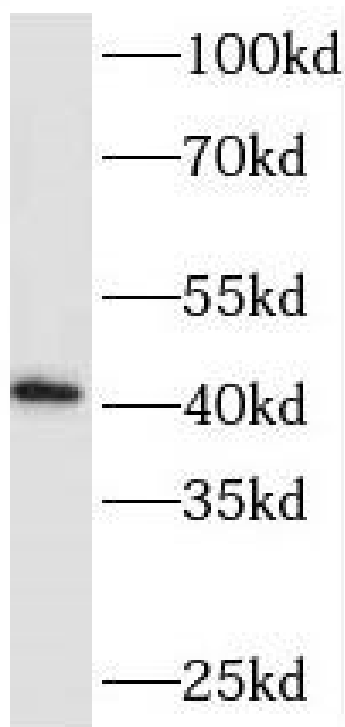
Does not have cyclase activity. Plays a role in 40S-ribosomal-subunit biogenesis in the early pre-rRNA processing steps at sites A0, A1 and A2 that are required for proper maturation of the 18S RNA(By similarity).

### Immunogen information

Immunogen:	RNA terminal phosphate cyclase-like 1
Synonyms:	RNA 3'-terminal phosphate cyclase-like protein RCL1 RNAC RPC2 RPCL1 RTC2
Observed MW:	41 kDa
Uniprot ID :	Q9Y2P8

### Application

Reactivity:	Human, Mouse, Rat
Tested Application:	ELISA, WB, IF
Recommended dilution:	WB: 1:500-1:2000; IF: 1:20-1:200
Image:	



A431 cells were subjected to SDS PAGE followed by western blot with FNab07211(RCL1 antibody) at dilution of 1:1000