

RCC1 antibody

Product Information

Catalog No.:	FNab07208
Size:	100µg
Form:	liquid
Purification:	Immunogen affinity purified
Purity:	≥95% as determined by SDS-PAGE
Host:	Rabbit
Clonality:	polyclonal
Clone ID:	None
IsoType:	IgG
Storage:	PBS with 0.02% sodium azide and 50% glycerol pH 7.3, -20°C for 12 months(Avoid repeated freeze / thaw cycles.)

Background

CHC1, also named as RCC1, promotes the exchange of ran-bound gdp by gtp. It is involved in the regulation of onset of chromosome condensation in the S-phase. Phosphorylation of RCC1 on serines located in or near its nuclear localization signal activates RCC1 to generate RanGTP on mitotic chromosomes, which is required for spindle assembly and chromosome segregation. This antibody is a rabbit polyclonal antibody raised against residues near the C terminus of human RCC1.

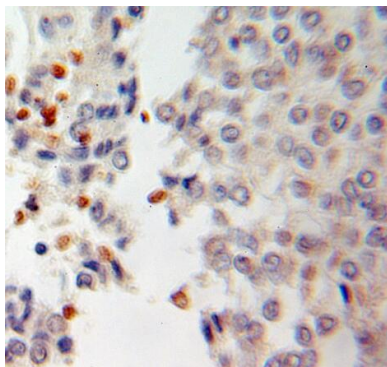
Immunogen information

Immunogen:	regulator of chromosome condensation 1
Synonyms:	Regulator of chromosome condensation Cell cycle regulatory protein Chromosome condensation protein 1 RCC1 CHC1
Observed MW:	50 kDa
Uniprot ID :	P18754

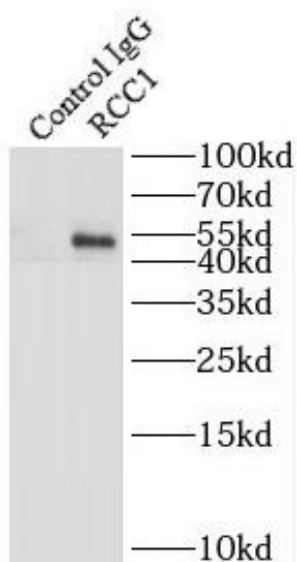
Application

Reactivity:	Human, Mouse, Rat
Tested Application:	ELISA, WB, IHC, IP, IF
Recommended dilution:	WB: 1:500-1:5000; IP: 1:500-1:5000; IHC: 1:20-1:200; IF: 1:20-1:200

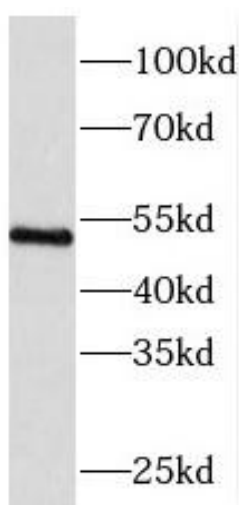
Image:



Immunohistochemistry of paraffin-embedded human ovary tumor using FNab07208(SNHG3-RCC1 antibody) at dilution of 1:100



IP Result of anti-RCC1 (IP:FNab07208, 3ug; Detection:FNab07208 1:1000) with HEK-293 cells lysate 1000ug.



MCF7 cells were subjected to SDS PAGE followed by western blot with FNab07208(SNHG3-RCC1 antibody) at dilution of 1:300