

RB1 antibody

Product Information

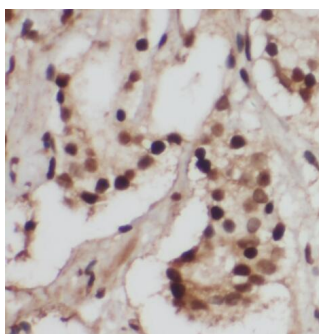
Catalog No.:	FNab07141
Size:	100µg
Form:	liquid
Purification:	Immunogen affinity purified
Purity:	≥95% as determined by SDS-PAGE
Host:	Rabbit
Clonality:	polyclonal
Clone ID:	None
IsoType:	IgG
Storage:	PBS with 0.02% sodium azide and 50% glycerol pH 7.3, -20°C for 12 months(Avoid repeated freeze / thaw cycles.)

Immunogen information

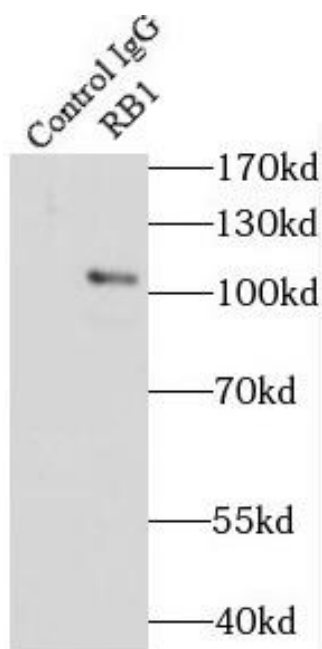
Immunogen:	retinoblastoma 1
Synonyms:	Retinoblastoma-associated protein p105-Rb p110-RB1 pRb (Rb) pp110 RB1
Observed MW:	110 kDa
Uniprot ID :	P06400

Application

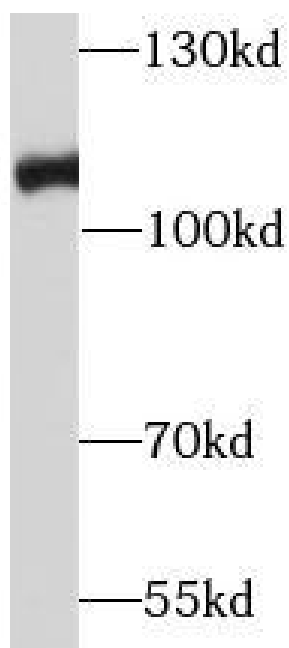
Reactivity:	Human, Mouse
Tested Application:	ELISA, WB, IHC, IP
Recommended dilution:	WB: 1:1000-1:3000; IP:1:200-1:1000; IHC: 1:50-1:200
Image:	



Immunohistochemistry of paraffin-embedded human prostate cancer using FNab07141(RB1 antibody) at dilution of 1:200



IP result of anti-RB1(IP:FNab07141, 3ug;
Detection:FNab07141 1:500) with A431 cells
lysate 3000 ug



Jurkat cells were subjected to SDS PAGE followed
by western blot with FNab07141(RB1 antibody) at
dilution of 1:3000