

RASGRF1 antibody

Product Information

Catalog No.:	FNab07131
Size:	100µg
Form:	liquid
Purification:	Immunogen affinity purified
Purity:	≥95% as determined by SDS-PAGE
Host:	Rabbit
Clonality:	polyclonal
Clone ID:	None
IsoType:	IgG
Storage:	PBS with 0.02% sodium azide and 50% glycerol pH 7.3, -20°C for 12 months (Avoid repeated freeze / thaw cycles.)

Background

The protein encoded by this gene is a guanine nucleotide exchange factor (GEF) similar to the *Saccharomyces cerevisiae* CDC25 gene product. Functional analysis has demonstrated that this protein stimulates the dissociation of GDP from RAS protein. The studies of the similar gene in mouse suggested that the Ras-GEF activity of this protein in brain can be activated by Ca²⁺ influx, muscarinic receptors, and G protein beta-gamma subunit. Mouse studies also indicated that the Ras-GEF signaling pathway mediated by this protein may be important for long-term memory. Alternatively spliced transcript variants encoding distinct isoforms have been reported.

Immunogen information

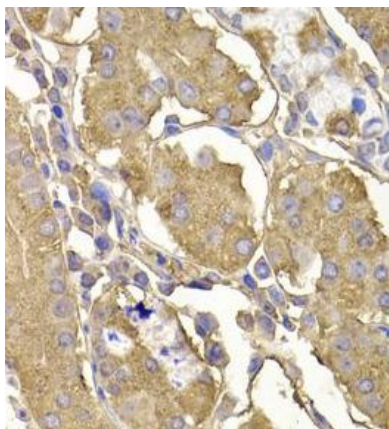
Immunogen:	Ras protein-specific guanine nucleotide-releasing factor 1
Synonyms:	Ras-specific guanine nucleotide-releasing factor 1 (Ras-GRF1) Guanine nucleotide-releasing protein (GNRP) Ras-specific nucleotide exchange factor CDC25 RASGRF1 CDC25 GNRP GRF1
Observed MW:	145 kDa
Uniprot ID :	Q13972

Application

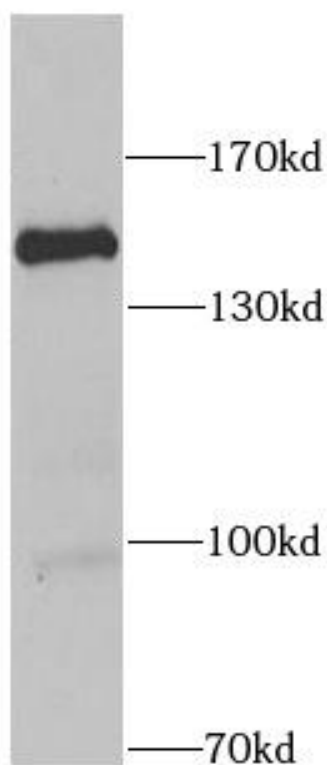
Reactivity:	Human, Mouse
Tested Application:	ELISA, WB, IHC, IF

Recommended dilution: WB: 1:500 - 1:2000; IHC: 1:50 - 1:200; IF: 1:50 - 1:100

Image:



Immunohistochemistry of paraffin-embedded human stomach using FNab07131(RASGRF1 Antibody) at dilution of 1:100



mouse brain tissue were subjected to SDS PAGE followed by western blot with FNab07131(RASGRF1 Antibody) at dilution of 1:1000