

## RAPH1 antibody

### Product Information

Catalog No.:	FNab07117
Size:	100µg
Form:	liquid
Purification:	Immunogen affinity purified
Purity:	≥95% as determined by SDS-PAGE
Host:	Rabbit
Clonality:	polyclonal
Clone ID:	None
IsoType:	IgG
Storage:	PBS with 0.02% sodium azide and 50% glycerol pH 7.3, -20°C for 12 months(Avoid repeated freeze / thaw cycles.)

### Background

Mediator of localized membrane signals. Implicated in the regulation of lamellipodial dynamics. Negatively regulates cell adhesion.

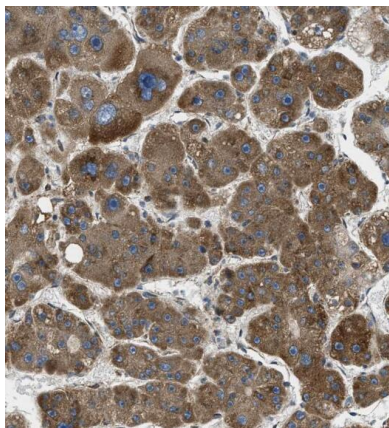
### Immunogen information

Immunogen:	Ras association(RalGDS/AF-6) and pleckstrin homology domains 1
Synonyms:	Ras-associated and pleckstrin homology domains-containing protein 1 (RAPH1) Amyotrophic lateral sclerosis 2 chromosomal region candidate gene 18 protein Amyotrophic lateral sclerosis 2 chromosomal region candidate gene 9 protein Lamellipodin Proline-rich EVH1 ligand 2 (PREL-2) Protein RMO1 RAPH1 ALS2CR18 ALS2CR9 KIAA1681 LPD PREL2 RMO1
Observed MW:	67 kDa
Uniprot ID :	Q70E73

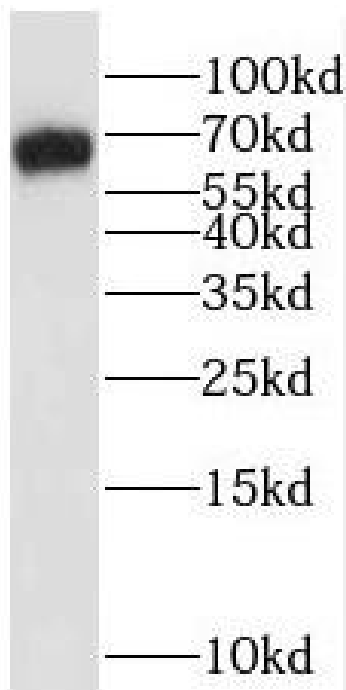
### Application

Reactivity:	Human
Tested Application:	ELISA, WB, IHC, IF
Recommended dilution:	WB: 1:500-1:2000; IHC: 1:20-1:200; IF: 1:20-1:200

Image:



Immunohistochemistry of paraffin-embedded human liver tissue slide using FNab07117(RAPH1 Antibody) at dilution of 1:50



SKOV-3 cells were subjected to SDS PAGE followed by western blot with FNab07117(RAPH1 Antibody) at dilution of 1:600