

RAF1 antibody

Product Information

| | |
|---------------|---|
| Catalog No.: | FNab07087 |
| Size: | 100µg |
| Form: | liquid |
| Purification: | Immunogen affinity purified |
| Purity: | ≥95% as determined by SDS-PAGE |
| Host: | Rabbit |
| Clonality: | polyclonal |
| Clone ID: | None |
| IsoType: | IgG |
| Storage: | PBS with 0.02% sodium azide and 50% glycerol pH 7.3, -20°C for 12 months (Avoid repeated freeze / thaw cycles.) |

Background

This gene is the cellular homolog of viral raf gene (v-raf). The encoded protein is a MAP kinase kinase kinase (MAP3K), which functions downstream of the Ras family of membrane associated GTPases to which it binds directly. Once activated, the cellular RAF1 protein can phosphorylate to activate the dual specificity protein kinases MEK1 and MEK2, which in turn phosphorylate to activate the serine/threonine specific protein kinases, ERK1 and ERK2. Activated ERKs are pleiotropic effectors of cell physiology and play an important role in the control of gene expression involved in the cell division cycle, apoptosis, cell differentiation and cell migration. Mutations in this gene are associated with Noonan syndrome 5 and LEOPARD syndrome 2.

Immunogen information

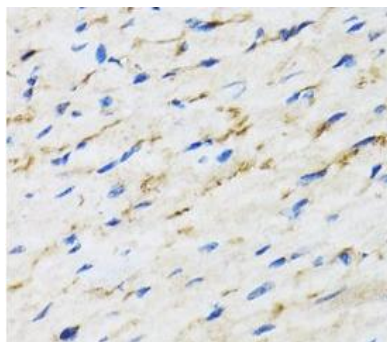
| | |
|--------------|---|
| Immunogen: | v-raf-1 murine leukemia viral oncogene homolog 1 |
| Synonyms: | RAF proto-oncogene serine/threonine-protein kinase Proto-oncogene c-RAF (cRaf) Raf-1 RAF1 RAF |
| Observed MW: | 75 kDa |
| Uniprot ID : | P04049 |

Application

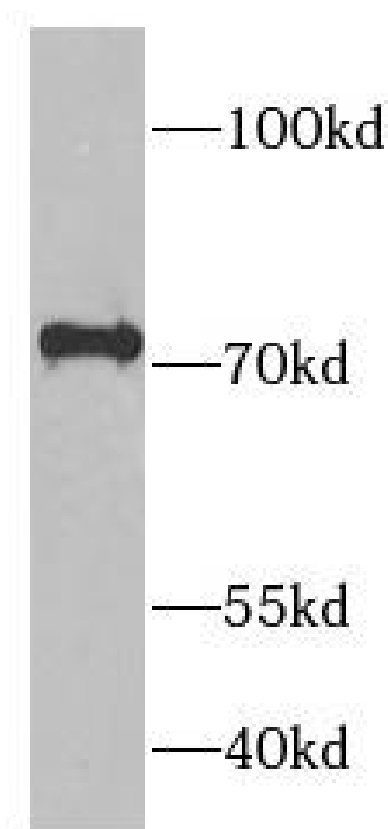
| | |
|---------------------|--------------------|
| Reactivity: | Human, Mouse, Rat |
| Tested Application: | ELISA, WB, IHC, IF |

Recommended dilution: WB: 1:500 - 1:2000; IHC: 1:50 - 1:200; IF: 1:50 - 1:200

Image:



Immunohistochemistry of paraffin-embedded rat heart using FNab07087(RAF1 antibody) at dilution of 1:50



Jurkat cells were subjected to SDS PAGE followed by western blot with FNab07087(RAF1 antibody) at dilution of 1:1000