

RAE1 antibody

Product Information

Catalog No.:	FNab07086
Size:	100µg
Form:	liquid
Purification:	Immunogen affinity purified
Purity:	≥95% as determined by SDS-PAGE
Host:	Rabbit
Clonality:	polyclonal
Clone ID:	None
IsoType:	IgG
Storage:	PBS with 0.02% sodium azide and 50% glycerol pH 7.3, -20°C for 12 months (Avoid repeated freeze / thaw cycles.)

Background

Mutations in the *Schizosaccharomyces pombe* Rael1 and *Saccharomyces cerevisiae* Gle2 genes have been shown to result in accumulation of poly(A)-containing mRNA in the nucleus, suggesting that the encoded proteins are involved in RNA export. The protein encoded by this gene is a homolog of yeast Rael1. It contains four WD40 motifs, and has been shown to localize to distinct foci in the nucleoplasm, to the nuclear rim, and to meshwork-like structures throughout the cytoplasm. This gene is thought to be involved in nucleocytoplasmic transport, and in directly or indirectly attaching cytoplasmic mRNPs to the cytoskeleton. Alternatively spliced transcript variants encoding the same protein have been found for this gene.

Immunogen information

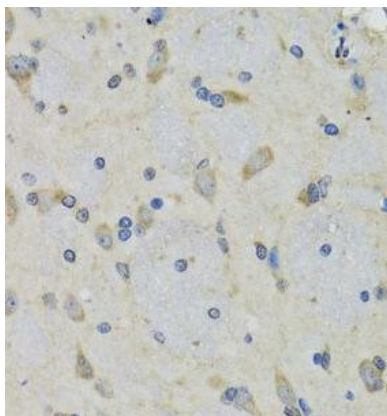
Immunogen:	RAE1 RNA export 1 homolog (S. pombe)
Synonyms:	mRNA export factor RAE1 Rae1 protein homolog mRNA-associated protein mrnp 41 RAE1 MRNP41
Observed MW:	40 kDa
Uniprot ID :	P78406

Application

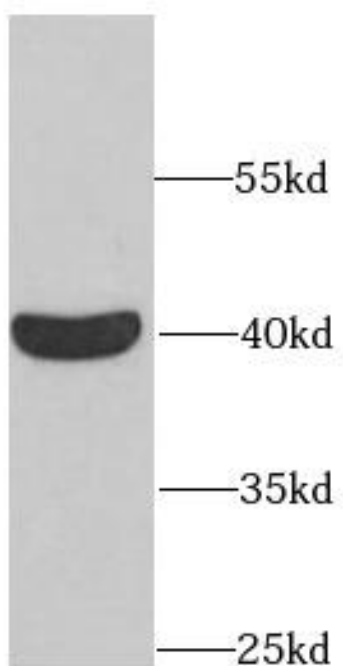
Reactivity:	Human, Mouse, Rat
Tested Application:	ELISA, WB, IHC, IF

Recommended dilution: WB: 1:500 - 1:2000; IHC: 1:50 - 1:200; IF: 1:50 - 1:200

Image:



Immunohistochemistry of paraffin-embedded rat brain using FNab07086(RAE1 antibody) at dilution of 1:100



HeLa cells were subjected to SDS PAGE followed by western blot with FNab07086(RAE1 antibody) at dilution of 1:1000