

RABL2A antibody

Product Information

Catalog No.:	FNab07061
Size:	100µg
Form:	liquid
Purification:	Immunogen affinity purified
Purity:	≥95% as determined by SDS-PAGE
Host:	Rabbit
Clonality:	polyclonal
Clone ID:	None
IsoType:	IgG
Storage:	PBS with 0.02% sodium azide and 50% glycerol pH 7.3, -20°C for 12 months(Avoid repeated freeze / thaw cycles.)

Background

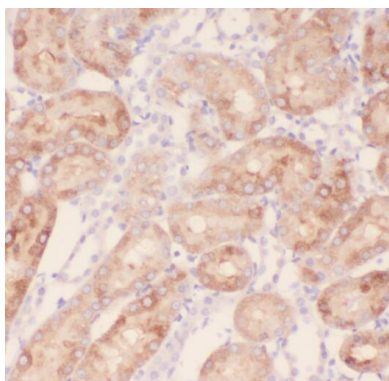
Plays an essential role in male fertility, sperm intra-flagellar transport, and tail assembly. Binds, in a GTP-regulated manner, to a specific set of effector proteins including key proteins involved in cilia development and function and delivers them into the growing sperm tail(By similarity).

Immunogen information

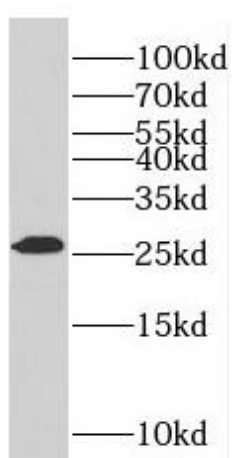
Immunogen:	RAB, member of RAS oncogene family-like 2A
Synonyms:	Rab-like protein 2A RABL2A
Observed MW:	26 kDa
Uniprot ID :	Q9UBK7

Application

Reactivity:	Human, Mouse, Rat
Tested Application:	ELISA, WB, IHC
Recommended dilution:	WB: 1:500-1:2000; IHC: 1:20-1:200
Image:	



Immunohistochemistry of paraffin-embedded human kidney using FNab07061(RABL2A antibody) at dilution of 1:50



mouse pancreas tissue were subjected to SDS PAGE followed by western blot with FNab07061(RABL2A antibody) at dilution of 1:300