

RAB6A antibody

Product Information

Catalog No.:	FNab07041
Size:	100µg
Form:	liquid
Purification:	Immunogen affinity purified
Purity:	≥95% as determined by SDS-PAGE
Host:	Rabbit
Clonality:	polyclonal
Clone ID:	None
IsoType:	IgG
Storage:	PBS with 0.02% sodium azide and 50% glycerol pH 7.3, -20°C for 12 months(Avoid repeated freeze / thaw cycles.)

Background

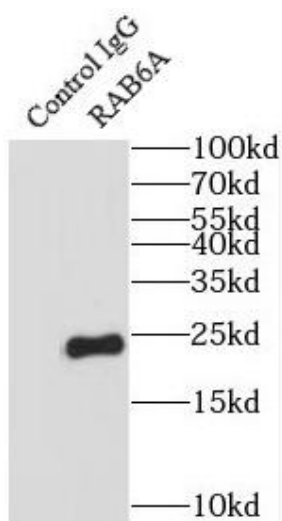
Protein transport. Regulator of membrane traffic from the Golgi apparatus towards the endoplasmic reticulum(ER). Has a low GTPase activity.

Immunogen information

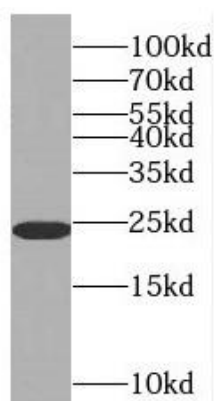
Immunogen:	RAB6A, member RAS oncogene family
Synonyms:	Ras-related protein Rab-6A (Rab-6) RAB6A RAB6
Observed MW:	24 kDa
Uniprot ID :	P20340

Application

Reactivity:	Human, Mouse
Tested Application:	ELISA, WB, IP
Recommended dilution:	WB: 1:500-1:2000; IP: 1:200-1:2000
Image:	



IP Result of anti-RAB6A (IP:FNab07041, 4ug;
Detection:FNab07041 1:500) with mouse brain
tissue lysate 2640ug.



mouse brain tissue were subjected to SDS PAGE
followed by western blot with FNab07041(RAB6A
antibody) at dilution of 1:1500