

RAB3C antibody

Product Information

| | |
|---------------|----------------------------------------------------------------------------------------------------------------|
| Catalog No.: | FNab07027 |
| Size: | 100µg |
| Form: | liquid |
| Purification: | Immunogen affinity purified |
| Purity: | ≥95% as determined by SDS-PAGE |
| Host: | Rabbit |
| Clonality: | polyclonal |
| Clone ID: | None |
| IsoType: | IgG |
| Storage: | PBS with 0.02% sodium azide and 50% glycerol pH 7.3, -20°C for 12 months(Avoid repeated freeze / thaw cycles.) |

Background

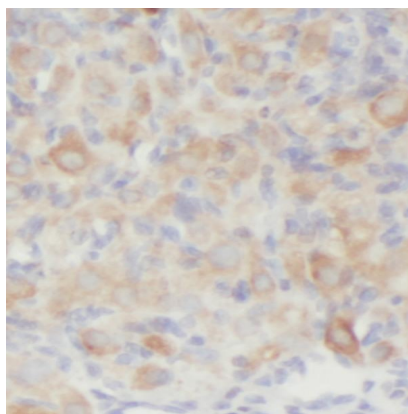
Protein transport. Probably involved in vesicular traffic(By similarity).

Immunogen information

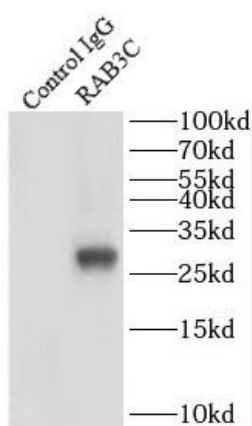
| | |
|--------------|-----------------------------------|
| Immunogen: | RAB3C, member RAS oncogene family |
| Synonyms: | Ras-related protein Rab-3C RAB3C |
| Observed MW: | 28 kDa |
| Uniprot ID : | Q96E17 |

Application

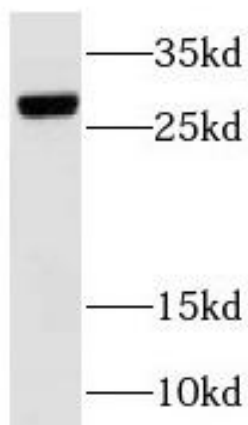
| | |
|-----------------------|-----------------------------------------------------|
| Reactivity: | Human, Mouse |
| Tested Application: | ELISA, WB, IHC, IP |
| Recommended dilution: | WB: 1:500-1:2000; IP: 1:200-1:1000; IHC: 1:20-1:200 |
| Image: | |



Immunohistochemistry of paraffin-embedded human ovary tumor using FNab07027(RAB3C antibody) at dilution of 1:100



IP Result of anti-RAB3C (IP:FNab07027, 4ug; Detection:FNab07027 1:300) with mouse brain tissue lysate 4000ug.



mouse lung tissue were subjected to SDS PAGE followed by western blot with FNab07027(RAB3C antibody) at dilution of 1:1000