

RAB14 antibody

Product Information

Catalog No.:	FNab06996
Size:	100µg
Form:	liquid
Purification:	Immunogen affinity purified
Purity:	≥95% as determined by SDS-PAGE
Host:	Rabbit
Clonality:	polyclonal
Clone ID:	None
IsoType:	IgG
Storage:	PBS with 0.02% sodium azide and 50% glycerol pH 7.3, -20°C for 12 months(Avoid repeated freeze / thaw cycles.)

Background

Involved in membrane trafficking between the Golgi complex and endosomes during early embryonic development. Regulates the Golgi to endosome transport of FGFR-containing vesicles during early development, a key process for developing basement membrane and epiblast and primitive endoderm lineages during early postimplantation development. May act by modulating the kinesin KIF16B-cargo association to endosomes(By similarity). Regulates, together with its guanine nucleotide exchange factor DENND6A, the specific endocytic transport of ADAM10, N-cadherin/CDH2 shedding and cell-cell adhesion.

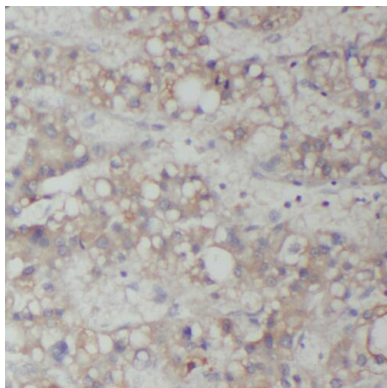
Immunogen information

Immunogen:	RAB14, member RAS oncogene family
Synonyms:	Ras-related protein Rab-14 RAB14
Observed MW:	24 kDa
Uniprot ID :	P61106

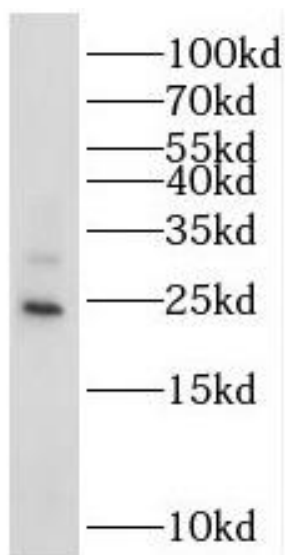
Application

Reactivity:	Human, Mouse, Rat
Tested Application:	ELISA, WB, IHC
Recommended dilution:	WB: 1:500-1:2000; IHC: 1:20-1:200

Image:



Immunohistochemistry of paraffin-embedded human liver cancer tissue slide using FNab06996(RAB14 Antibody) at dilution of 1:50



human brain tissue were subjected to SDS PAGE followed by western blot with FNab06996(RAB14 antibody) at dilution of 1:500