

---

## PYGM-Specific antibody

### Product Information

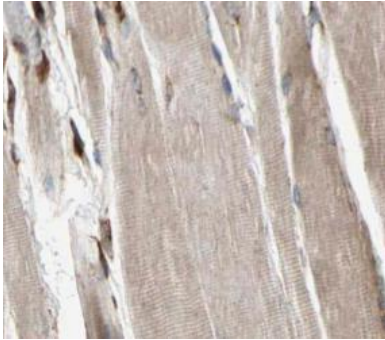
|               |  |
|---------------|--|
| Catalog No.:  | FNab06977  |
| Size:         | 100µg  |
| Form:         | liquid   |
| Purification: | Immunogen affinity purified  |
| Purity:       | ≥95% as determined by SDS-PAGE   |
| Host:         | Rabbit   |
| Clonality:    | polyclonal   |
| Clone ID:     | None   |
| IsoType:      | IgG  |
| Storage:      | PBS with 0.02% sodium azide and 50% glycerol pH 7.3, -20°C for 12 months(Avoid repeated freeze / thaw cycles.) |

### Immunogen information

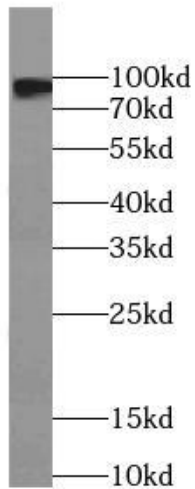
|              |   |
|--------------|---|
| Immunogen:   | phosphorylase, glycogen, muscle                           |
| Synonyms:    | Glycogen phosphorylase, muscle form Myophosphorylase PYGM |
| Observed MW: | 97 kDa  |
| Uniprot ID : | P11217  |

### Application

|                       |                                   |
|-----------------------|-----------------------------------|
| Reactivity:           | Human, Mouse, Rat                 |
| Tested Application:   | ELISA, WB, IHC                    |
| Recommended dilution: | WB: 1:500-1:2000; IHC: 1:20-1:200 |
| Image:                |                                   |



Immunohistochemistry of paraffin-embedded human skeletal muscle using FNab06977(PYGM-Specific antibody) at dilution of 1:50



mouse skeletal muscle tissue were subjected to SDS PAGE followed by western blot with FNab06977(PYGM-Specific Antibody) at dilution of 1:1000