

## PTPRS antibody

### Product Information

Catalog No.:	FNab06948
Size:	100µg
Form:	liquid
Purification:	Immunogen affinity purified
Purity:	≥95% as determined by SDS-PAGE
Host:	Rabbit
Clonality:	polyclonal
Clone ID:	None
IsoType:	IgG
Storage:	PBS with 0.02% sodium azide and 50% glycerol pH 7.3, -20°C for 12 months(Avoid repeated freeze / thaw cycles.)

### Background

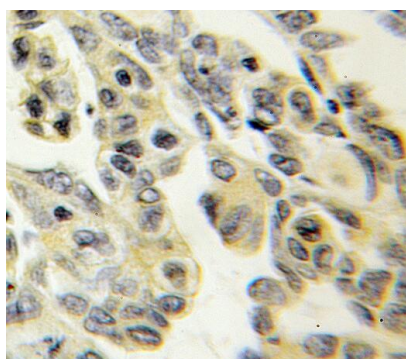
Type II a receptor protein tyrosine phosphatases (rPTPσ) are cell surface receptors important for nervous system development, function, and repair. The expression of rPTPσ has previously been reported in b-cells and other target organs for INS although the probes chosen did not permit to distinguish between the splice variants. Proteolytic processing near the transmembrane domain generates an extracellular N-terminal E-domain of 130 kDa and a C-terminal P-domain of approximately 85 kDa of rPTPσ, and the short splice variants rPTPσ 3 and 4 contain an E-domain of 95 kDa (PMID: 16552719). rPTPσ expression was observed in tissue lysates of the adult mouse sensory-motor cortex and thoracic spinal cord (T8-T10) as a 75-80kDa immunoreactive band (PMID: 19780196).

### Immunogen information

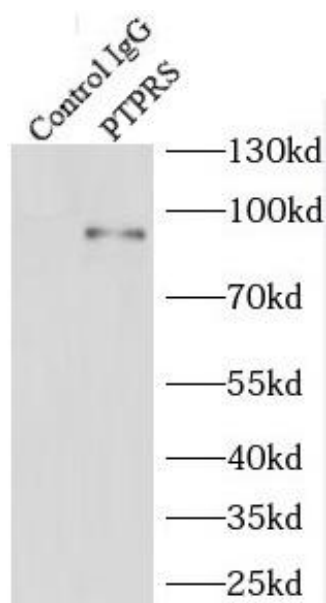
Immunogen:	protein tyrosine phosphatase, receptor type, S
Synonyms:	Receptor-type tyrosine-protein phosphatase S (R-PTP-S) Receptor-type tyrosine-protein phosphatase sigma (R-PTP-sigma) PTPRS
Observed MW:	75-100 kDa, 220 kDa
Uniprot ID :	Q13332

### Application

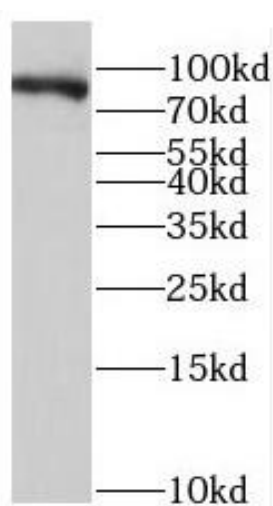
Reactivity:	Human, Mouse, Rat
Tested Application:	ELISA, WB, IHC, IP, FC
Recommended dilution:	WB: 1:200-1:2000; IP: 1:200-1:1000; IHC: 1:20-1:200
Image:	



Immunohistochemistry of paraffin-embedded human ovary tumor using FNab06948(rPTPI antibody) at dilution of 1:100



IP Result of anti-PTPRS (IP:FNab06948, 5ug; Detection:FNab06948 1:400) with mouse brain tissue lysate 6500ug.



HeLa cells were subjected to SDS PAGE followed by western blot with FNab06948(rPTPI antibody) at dilution of 1:1000