

PTPN22 antibody

Product Information

Catalog No.:	FNab06936
Size:	100µg
Form:	liquid
Purification:	Immunogen affinity purified
Purity:	≥95% as determined by SDS-PAGE
Host:	Rabbit
Clonality:	polyclonal
Clone ID:	None
IsoType:	IgG
Storage:	PBS with 0.02% sodium azide and 50% glycerol pH 7.3, -20°C for 12 months(Avoid repeated freeze / thaw cycles.)

Background

Acts as negative regulator of T-cell receptor(TCR) signaling by direct dephosphorylation of the Src family kinases LCK and FYN, ITAMs of the TCRz/CD3 complex, as well as ZAP70, VAV, VCP and other key signaling molecules(PubMed:16461343, PubMed:18056643). Associates with and probably dephosphorylates CBL. Dephosphorylates LCK at its activating 'Tyr-394' residue(PubMed:21719704). Dephosphorylates ZAP70 at its activating 'Tyr-493' residue(PubMed:16461343). Dephosphorylates the immune system activator SKAP2(PubMed:21719704). Positively regulates toll-like receptor(TLR)-induced type 1 interferon production(PubMed:23871208). Promotes host antiviral responses mediated by type 1 interferon(By similarity). Regulates NOD2-induced pro-inflammatory cytokine secretion and autophagy(PubMed:23991106).

Immunogen information

Immunogen:	protein tyrosine phosphatase, non-receptor type 22(lymphoid)
Synonyms:	Tyrosine-protein phosphatase non-receptor type 22 Hematopoietic cell protein-tyrosine phosphatase 70Z-PEP Lymphoid phosphatase (LyP) PEST-domain phosphatase (PEP) PTPN22 PTPN8
Observed MW:	79-95 kDa
Uniprot ID :	Q9Y2R2

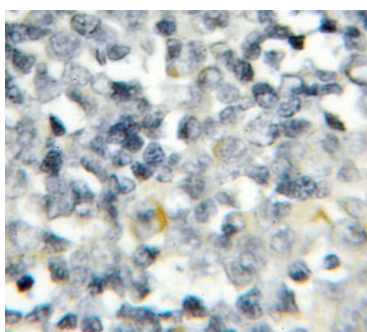
Application

Reactivity: Human, Mouse, Rat

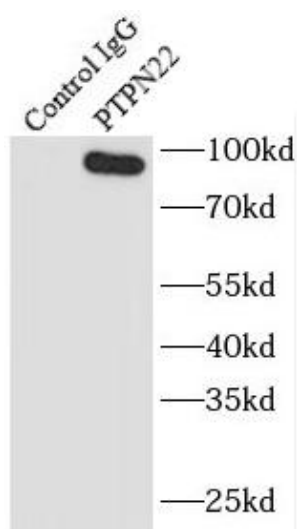
Tested Application: ELISA, WB, IHC, IP

Recommended dilution: WB: 1:200-1:2000; IP: 1:200-1:1000; IHC: 1:20-1:200

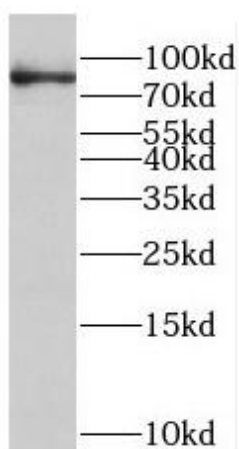
Image:



Immunohistochemistry of paraffin-embedded human lymphoma using FNab06936(PTPN22 antibody) at dilution of 1:50



IP Result of anti-PTPN22 (IP:FNab06936, 4ug; Detection:FNab06936 1:300) with Jurkat cells lysate 3080ug.



Jurkat cells were subjected to SDS PAGE followed by western blot with FNab06936(PTPN22 antibody) at dilution of 1:600