

PSPH antibody

Product Information

Catalog No.:	FNab06902
Size:	100µg
Form:	liquid
Purification:	Immunogen affinity purified
Purity:	≥95% as determined by SDS-PAGE
Host:	Rabbit
Clonality:	polyclonal
Clone ID:	None
IsoType:	IgG
Storage:	PBS with 0.02% sodium azide and 50% glycerol pH 7.3, -20°C for 12 months (Avoid repeated freeze / thaw cycles.)

Background

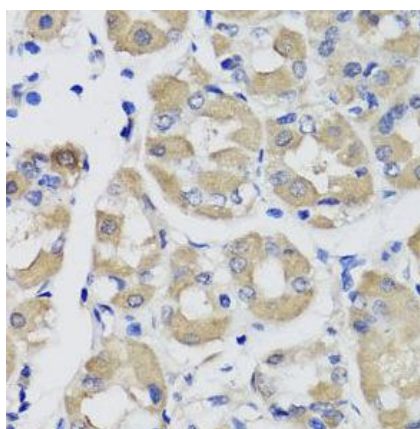
The protein encoded by this gene belongs to a subfamily of the phosphotransferases. This encoded enzyme is responsible for the third and last step in L-serine formation. It catalyzes magnesium-dependent hydrolysis of L-phosphoserine and is also involved in an exchange reaction between L-serine and L-phosphoserine. Deficiency of this protein is thought to be linked to Williams syndrome.

Immunogen information

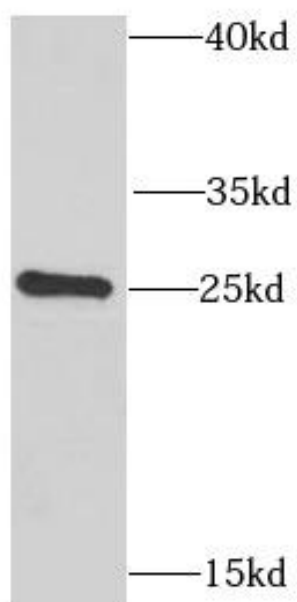
Immunogen:	phosphoserine phosphatase
Synonyms:	Phosphoserine phosphatase (PSP, PSPase) L-3-phosphoserine phosphatase O-phosphoserine phosphohydrolase PSPH
Observed MW:	25 kDa
Uniprot ID :	P78330

Application

Reactivity:	Human, Mouse, Rat
Tested Application:	ELISA, WB, IHC
Recommended dilution:	WB: 1:500 - 1:2000; IHC: 1:50 - 1:200
Image:	



Immunohistochemistry of paraffin-embedded human stomach using FNab06902(PSPH antibody) at dilution of 1:100



HeLa cells were subjected to SDS PAGE followed by western blot with FNab06902(PSPH antibody) at dilution of 1:1000