

## PSMC1 antibody

### Product Information

Catalog No.:	FNab06877
Size:	100µg
Form:	liquid
Purification:	Immunogen affinity purified
Purity:	≥95% as determined by SDS-PAGE
Host:	Rabbit
Clonality:	polyclonal
Clone ID:	None
IsoType:	IgG
Storage:	PBS with 0.02% sodium azide and 50% glycerol pH 7.3, -20°C for 12 months(Avoid repeated freeze / thaw cycles.)

### Background

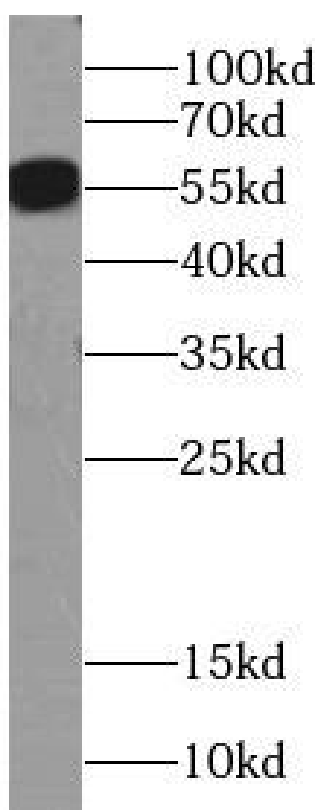
The 26S protease is involved in the ATP-dependent degradation of ubiquitinated proteins. The regulatory(or ATPase) complex confers ATP dependency and substrate specificity to the 26S complex.

### Immunogen information

Immunogen:	proteasome(prosome, macropain) 26S subunit, ATPase, 1
Synonyms:	26S proteasome regulatory subunit 4 (P26s4) 26S proteasome AAA-ATPase subunit RPT2 Proteasome 26S subunit ATPase 1 PSMC1
Observed MW:	55 kDa
Uniprot ID :	P62191

### Application

Reactivity:	Human, Mouse, Rat
Tested Application:	ELISA, WB
Recommended dilution:WB:	1:500-1:5000
Image:	



A549 cells were subjected to SDS PAGE followed by western blot with FNab06877(PSMC1 Antibody) at dilution of 1:1000