

PSMB7 antibody

Product Information

| | |
|---------------|--|
| Catalog No.: | FNab06876 |
| Size: | 100µg |
| Form: | liquid |
| Purification: | Immunogen affinity purified |
| Purity: | ≥95% as determined by SDS-PAGE |
| Host: | Rabbit |
| Clonality: | polyclonal |
| Clone ID: | None |
| IsoType: | IgG |
| Storage: | PBS with 0.02% sodium azide and 50% glycerol pH 7.3, -20°C for 12 months(Avoid repeated freeze / thaw cycles.) |

Background

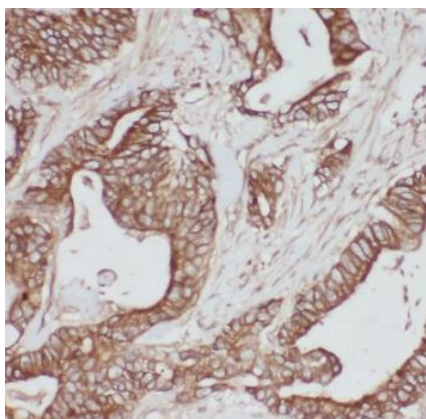
The proteasome is a multicatalytic proteinase complex which is characterized by its ability to cleave peptides with Arg, Phe, Tyr, Leu, and Glu adjacent to the leaving group at neutral or slightly basic pH. The proteasome has an ATP-dependent proteolytic activity. This unit is responsible of the trypsin-like activity.

Immunogen information

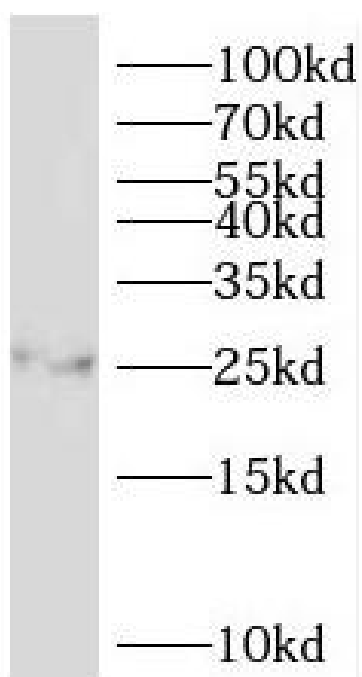
| | |
|--------------|--|
| Immunogen: | proteasome(prosome, macropain) subunit, beta type, 7 |
| Synonyms: | Proteasome subunit beta type-7 Macropain chain Z Multicatalytic endopeptidase complex chain Z Proteasome subunit Z PSMB7 Z |
| Observed MW: | 25-27 kDa |
| Uniprot ID : | Q99436 |

Application

| | |
|-----------------------|-----------------------------------|
| Reactivity: | Human, Mouse, Rat |
| Tested Application: | ELISA, WB, IHC |
| Recommended dilution: | WB: 1:500-1:2000; IHC: 1:20-1:200 |
| Image: | |



Immunohistochemistry of paraffin-embedded human colon cancer using FNab06876(PSMB7 antibody) at dilution of 1:50



Raji cells were subjected to SDS PAGE followed by western blot with FNab06876(PSMB7 antibody) at dilution of 1:200