

## PSMB5 antibody

### Product Information

Catalog No.:	FNab06874
Size:	100µg
Form:	liquid
Purification:	Immunogen affinity purified
Purity:	≥95% as determined by SDS-PAGE
Host:	Rabbit
Clonality:	polyclonal
Clone ID:	None
IsoType:	IgG
Storage:	PBS with 0.02% sodium azide and 50% glycerol pH 7.3, -20°C for 12 months (Avoid repeated freeze / thaw cycles.)

### Background

The proteasome is a multicatalytic proteinase complex with a highly ordered ring-shaped 20S core structure. The core structure is composed of 4 rings of 28 non-identical subunits; 2 rings are composed of 7 alpha subunits and 2 rings are composed of 7 beta subunits. Proteasomes are distributed throughout eukaryotic cells at a high concentration and cleave peptides in an ATP/ubiquitin-dependent process in a non-lysosomal pathway. An essential function of a modified proteasome, the immunoproteasome, is the processing of class I MHC peptides. This gene encodes a member of the proteasome B-type family, also known as the T1B family, that is a 20S core beta subunit in the proteasome. This catalytic subunit is not present in the immunoproteasome and is replaced by catalytic subunit 3i (proteasome beta 8 subunit). Multiple transcript variants encoding different isoforms have been found for this gene.

### Immunogen information

Immunogen:	proteasome (prosome, macropain) subunit, beta type, 5
Synonyms:	Proteasome subunit beta type-5 Macropain epsilon chain Multicatalytic endopeptidase complex epsilon chain Proteasome chain 6 Proteasome epsilon chain Proteasome subunit MB1 Proteasome subunit X PSMB5 LMPX MB1 X
Observed MW:	21 kDa
Uniprot ID :	P28074

---

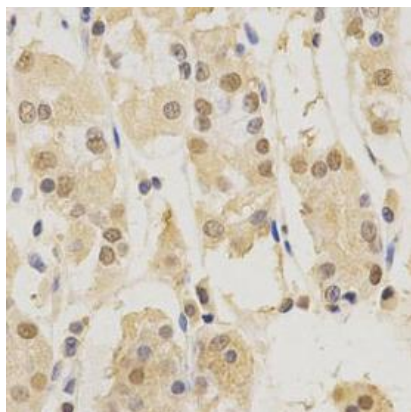
**Application**

Reactivity: Human, Mouse

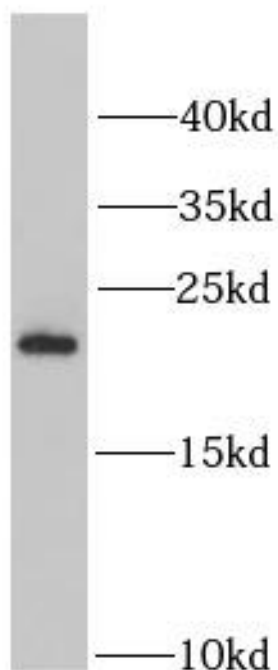
Tested Application: ELISA, WB, IHC, IF

Recommended dilution: WB: 1:500 - 1:2000; IHC: 1:50 - 1:200; IF: 1:50 - 1:200

Image:



Immunohistochemistry of paraffin-embedded human stomach using FNab06874(PSMB5 antibody) at dilution of 1:50



L02 cells were subjected to SDS PAGE followed by western blot with FNab06874(PSMB5 antibody) at dilution of 1:1000