

## PSMB2 antibody

### Product Information

Catalog No.:	FNab06871
Size:	100µg
Form:	liquid
Purification:	Immunogen affinity purified
Purity:	≥95% as determined by SDS-PAGE
Host:	Rabbit
Clonality:	polyclonal
Clone ID:	None
IsoType:	IgG
Storage:	PBS with 0.02% sodium azide and 50% glycerol pH 7.3, -20°C for 12 months (Avoid repeated freeze / thaw cycles.)

### Background

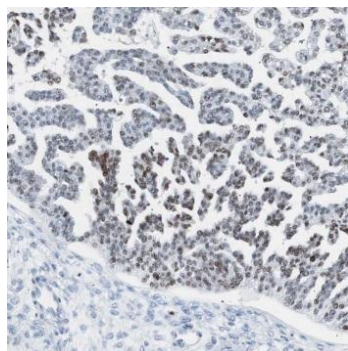
The proteasome is a multicatalytic proteinase complex with a highly ordered ring-shaped 20S core structure. The core structure is composed of 4 rings of 28 non-identical subunits; 2 rings are composed of 7 alpha subunits and 2 rings are composed of 7 beta subunits. Proteasomes are distributed throughout eukaryotic cells at a high concentration and cleave peptides in an ATP/ubiquitin-dependent process in a non-lysosomal pathway. An essential function of a modified proteasome, the immunoproteasome, is the processing of class I MHC peptides. This gene encodes a member of the proteasome B-type family, also known as the T1B family, that is a 20S core beta subunit. Multiple alternatively spliced transcript variants encoding distinct isoforms have been found for this gene.

### Immunogen information

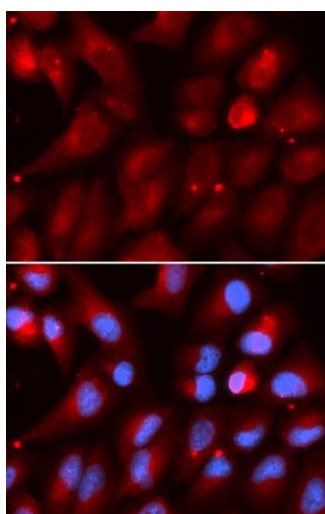
Immunogen:	proteasome (prosome, macropain) subunit, beta type, 2
Synonyms:	Proteasome subunit beta type-2 Macropain subunit C7-I Multicatalytic endopeptidase complex subunit C7-I Proteasome component C7-I PSMB2
Observed MW:	23 kDa
Uniprot ID :	P49721

### Application

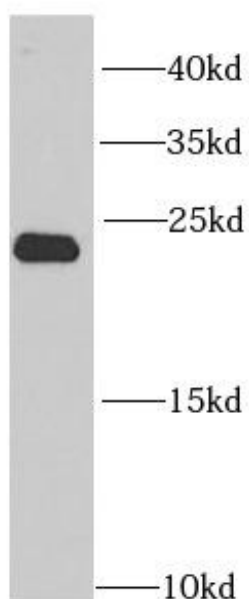
Reactivity:	Human, Mouse, Rat
Tested Application:	ELISA, WB, IHC, IF
Recommended dilution:	WB: 1:500 - 1:2000; IHC: 1:50 - 1:200; IF: 1:50 - 1:200
Image:	



Immunohistochemistry of paraffin-embedded human ovary tumor using FNab06871(PSMB2 antibody) at dilution of 1:50



Immunofluorescence analysis of U2OS cells using FNab06871(PSMB2 antibody) at dilution of 1:50



Jurkat cells were subjected to SDS PAGE followed by western blot with FNab06871(PSMB2 antibody) at dilution of 1:1000