

PSMB1 antibody

Product Information

Catalog No.:	FNab06868
Size:	100µg
Form:	liquid
Purification:	Immunogen affinity purified
Purity:	≥95% as determined by SDS-PAGE
Host:	Rabbit
Clonality:	polyclonal
Clone ID:	None
IsoType:	IgG
Storage:	PBS with 0.02% sodium azide and 50% glycerol pH 7.3, -20°C for 12 months (Avoid repeated freeze / thaw cycles.)

Background

The proteasome is a multicatalytic proteinase complex with a highly ordered ring-shaped 20S core structure. The core structure is composed of 4 rings of 28 non-identical subunits; 2 rings are composed of 7 alpha subunits and 2 rings are composed of 7 beta subunits. Proteasomes are distributed throughout eukaryotic cells at a high concentration and cleave peptides in an ATP/ubiquitin-dependent process in a non-lysosomal pathway. An essential function of a modified proteasome, the immunoproteasome, is the processing of class I MHC peptides. This gene encodes a member of the proteasome B-type family, also known as the T1B family, that is a 20S core beta subunit. This gene is tightly linked to the TBP (TATA-binding protein) gene in human and in mouse, and is transcribed in the opposite orientation in both species.

Immunogen information

Immunogen:	proteasome (prosome, macropain) subunit, beta type, 1
Synonyms:	Proteasome subunit beta type-1 Macropain subunit C5 Multicatalytic endopeptidase complex subunit C5 Proteasome component C5 Proteasome gamma chain PSMB1 PSC5
Observed MW:	23 kDa
Uniprot ID :	P20618

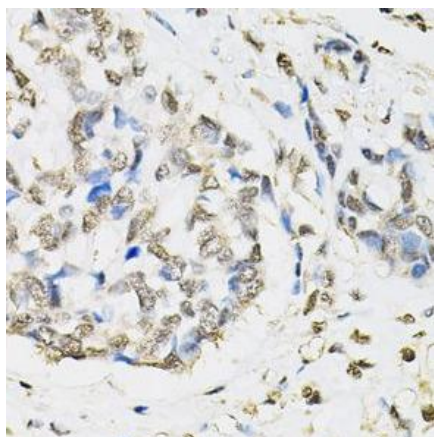
Application

Reactivity:	Human, Mouse, Rat
-------------	-------------------

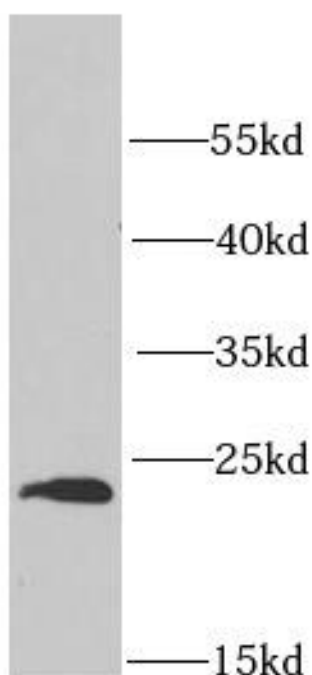
Tested Application: ELISA, WB, IHC, IF

Recommended dilution: WB: 1:500 - 1:2000; IHC: 1:50 - 1:200; IF: 1:50 - 1:200

Image:



Immunohistochemistry of paraffin-embedded human esophageal cancer using FNab06868(PSMB1 antibody) at dilution of 1:50



HeLa cells were subjected to SDS PAGE followed by western blot with FNab06868(PSMB1 antibody) at dilution of 1:1000