

PSMA2 antibody

Product Information

Catalog No.:	FNab06862
Size:	100µg
Form:	liquid
Purification:	Immunogen affinity purified
Purity:	≥95% as determined by SDS-PAGE
Host:	Rabbit
Clonality:	polyclonal
Clone ID:	None
IsoType:	IgG
Storage:	PBS with 0.02% sodium azide and 50% glycerol pH 7.3, -20°C for 12 months (Avoid repeated freeze / thaw cycles.)

Background

The proteasome is a multicatalytic proteinase complex with a highly ordered ring-shaped 20S core structure. The core structure is composed of 4 rings of 28 non-identical subunits; 2 rings are composed of 7 alpha subunits and 2 rings are composed of 7 beta subunits. Proteasomes are distributed throughout eukaryotic cells at a high concentration and cleave peptides in an ATP/ubiquitin-dependent process in a non-lysosomal pathway. An essential function of a modified proteasome, the immunoproteasome, is the processing of class I MHC peptides. This gene encodes a member of the peptidase T1A family, that is a 20S core alpha subunit.

Immunogen information

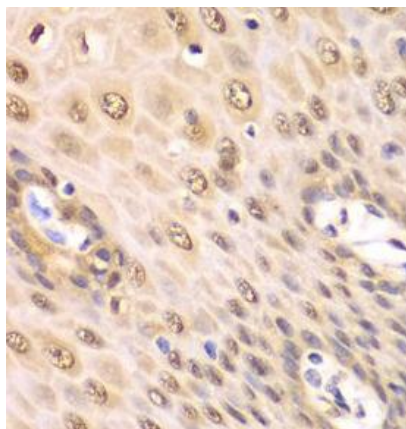
Immunogen:	proteasome (prosome, macropain) subunit, alpha type, 2
Synonyms:	Proteasome subunit alpha type-2 Macropain subunit C3 Multicatalytic endopeptidase complex subunit C3 Proteasome component C3 PSMA2 HC3 PSC3
Observed MW:	26 kDa
Uniprot ID :	P25787

Application

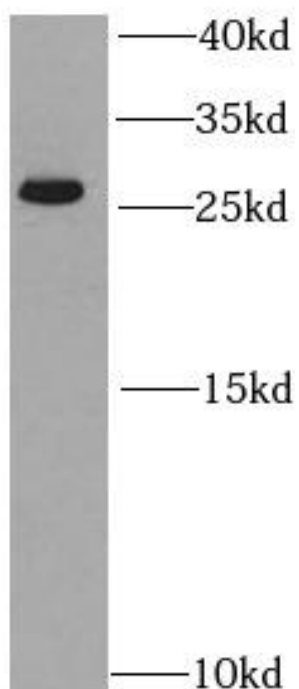
Reactivity:	Human, Mouse
Tested Application:	ELISA, WB, IHC

Recommended dilution: WB: 1:500 - 1:2000; IHC: 1:50 - 1:200

Image:



Immunohistochemistry of paraffin-embedded human esophagus using FNab06862(PSMA2 antibody) at dilution of 1:50



HeLa cells were subjected to SDS PAGE followed by western blot with FNab06862(PMSA2 antibody) at dilution of 1:1000