

## PSMA1 antibody

### Product Information

Catalog No.:	FNab06861
Size:	100µg
Form:	liquid
Purification:	Immunogen affinity purified
Purity:	≥95% as determined by SDS-PAGE
Host:	Rabbit
Clonality:	polyclonal
Clone ID:	None
IsoType:	IgG
Storage:	PBS with 0.02% sodium azide and 50% glycerol pH 7.3, -20°C for 12 months(Avoid repeated freeze / thaw cycles.)

### Background

The proteasome is a multicatalytic proteinase complex which is characterized by its ability to cleave peptides with Arg, Phe, Tyr, Leu, and Glu adjacent to the leaving group at neutral or slightly basic pH. The proteasome has an ATP-dependent proteolytic activity. Mediates the lipopolysaccharide-induced signal transduction in the macrophage proteasome(By similarity). Might be involved in the anti-inflammatory response of macrophages during the interaction with C.albicans heat-inactivated cells(By similarity).

### Immunogen information

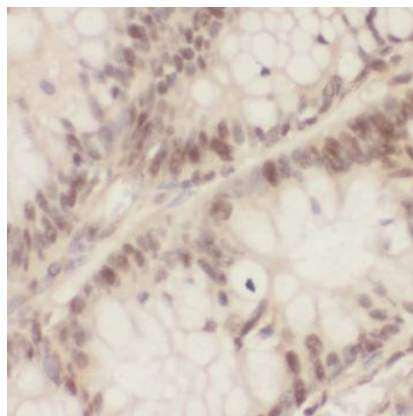
Immunogen:	proteasome(prosome, macropain) subunit, alpha type, 1
Synonyms:	Proteasome subunit alpha type-1 30 kDa prosomal protein (PROS-30) Macropain subunit C2 Multicatalytic endopeptidase complex subunit C2 Proteasome component C2 Proteasome nu chain PSMA1 HC2 NU PROS30 PSC2
Observed MW:	29-33 kDa
Uniprot ID :	P25786

### Application

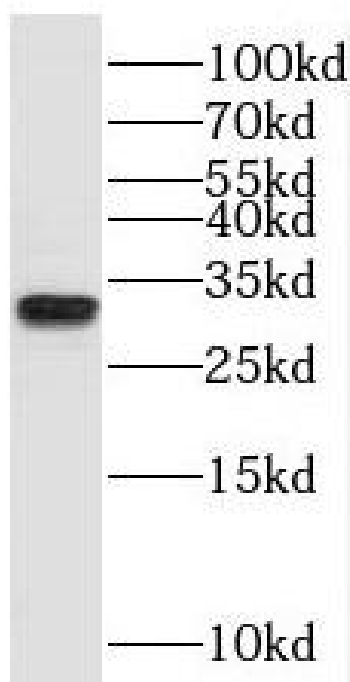
Reactivity:	Human, Mouse, Rat
Tested Application:	ELISA, WB, IHC, IF

Recommended dilution: WB: 1:500-1:2000; IHC: 1:20-1:200; IF: 1:20-1:200

Image:



Immunohistochemistry of paraffin-embedded human colon cancer using FNab06861(PSMA1 antibody) at dilution of 1:50



COLO 320 cells were subjected to SDS PAGE followed by western blot with FNab06861(PSMA1 antibody) at dilution of 1:600