

FOLH1 antibody

Product Information

Catalog No.:	FNab06860
Size:	100µg
Form:	liquid
Purification:	Immunogen affinity purified
Purity:	≥95% as determined by SDS-PAGE
Host:	Rabbit
Clonality:	polyclonal
Clone ID:	None
IsoType:	IgG
Storage:	PBS with 0.02% sodium azide and 50% glycerol pH 7.3, -20°C for 12 months(Avoid repeated freeze / thaw cycles.)

Background

None

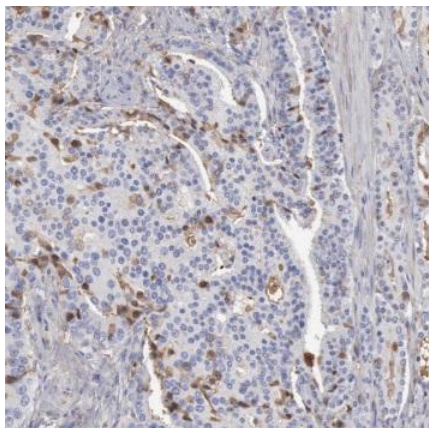
Immunogen information

Immunogen:	folate hydrolase(prostate-specific membrane antigen) 1
Synonyms:	Glutamate carboxypeptidase 2 Cell growth-inhibiting gene 27 protein Folate hydrolase 1 Folypoly-gamma-glutamate carboxypeptidase (FGCP) Glutamate carboxypeptidase II (GCP II) Membrane glutamate carboxypeptidase (mGCP) N-acetylated-alpha-linked acidic dipeptidase I (NAALADase I) Prostate-specific membrane antigen (PSM, PSMA) Pteroylpoly-gamma-glutamate carboxypeptidase FOLH1 FOLH NAALAD1 PSM PSMA
Observed MW:	100 kDa, 120 kDa
Uniprot ID :	Q04609

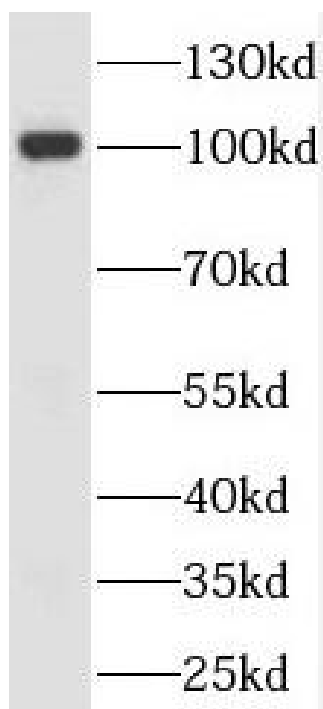
Application

Reactivity:	Human, Mouse, Rat
Tested Application:	ELISA, WB, IHC
Recommended dilution:	WB: 1:500-1:2000; IHC: 1:20-1:200

Image:



Immunohistochemistry of paraffin-embedded human prostate cancer using FNab06860(FOLH1 antibody) at dilution of 1:100



human liver tissue were subjected to SDS PAGE followed by western blot with FNab06860(FOLH1 antibody) at dilution of 1:500