

## PSG1 antibody

### Product Information

|               |   |
|---------------|---|
| Catalog No.:  | FNab06855   |
| Size:         | 100µg   |
| Form:         | liquid  |
| Purification: | Immunogen affinity purified   |
| Purity:       | ≥95% as determined by SDS-PAGE  |
| Host:         | Rabbit  |
| Clonality:    | polyclonal  |
| Clone ID:     | None  |
| IsoType:      | IgG   |
| Storage:      | PBS with 0.02% sodium azide and 50% glycerol pH 7.3, -20°C for 12 months (Avoid repeated freeze / thaw cycles.) |

### Background

The human placenta is a multihormonal endocrine organ that produces hormones, enzymes, and other molecules that support fetal survival and development. Pregnancy-specific beta-1-glycoprotein (PSBG, PSG) is a major product of the syncytiotrophoblast, reaching concentrations of 100 to 290 mg/l at term in the serum of pregnant women (Horne et al., 1976 [PubMed 971765]). PSG is a member of the immunoglobulin (Ig) superfamily (Watanabe and Chou, 1988 [PubMed 3257488]; Streydio et al., 1988 [PubMed 3260773]).

### Immunogen information

|              |   |
|--------------|---|
| Immunogen:   | pregnancy specific beta-1-glycoprotein 1  |
| Synonyms:    | Pregnancy-specific beta-1-glycoprotein 1 (PS-beta-G-1, PSBG-1, Pregnancy-specific glycoprotein 1) CD66 antigen-like family member F Fetal liver non-specific cross-reactive antigen 1/2 (FL-NCA-1/2) PSG95 Pregnancy-specific beta-1 glycoprotein C/D (PS-beta-C/D) PSG1 B1G1 PSBG1 PSGGA |
| Observed MW: | 75 kDa  |
| Uniprot ID : | P11464  |

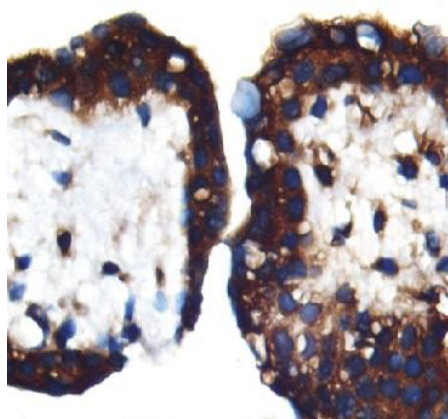
### Application

|             |       |
|-------------|-------|
| Reactivity: | Human |
|-------------|-------|

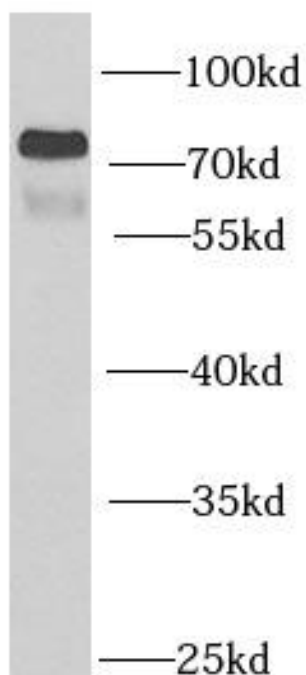
Tested Application: ELISA, WB, IHC

Recommended dilution: WB: 1:500 - 1:2000; IHC: 1:50 - 1:100

Image:



Immunohistochemistry of paraffin-embedded human stomach using FNab06855(PSG1 antibody) at dilution of 1:50



human kidney tissue were subjected to SDS PAGE followed by western blot with FNab06855(PSG1 antibody) at dilution of 1:1000