

SELP antibody

Product Information

Catalog No.:	FNab06852
Size:	100µg
Form:	liquid
Purification:	Protein A+G purification
Purity:	≥95% as determined by SDS-PAGE
Host:	Mouse
Clonality:	monoclonal
Clone ID:	4E10
IsoType:	IgG1
Storage:	PBS with 0.02% sodium azide and 50% glycerol pH 7.3, -20°C for 12 months(Avoid repeated freeze / thaw cycles.)

Background

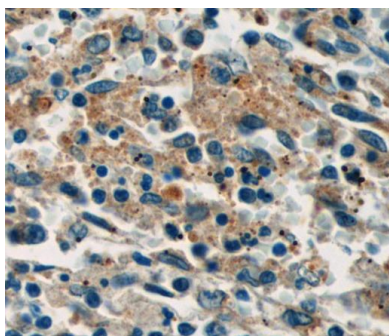
None

Immunogen information

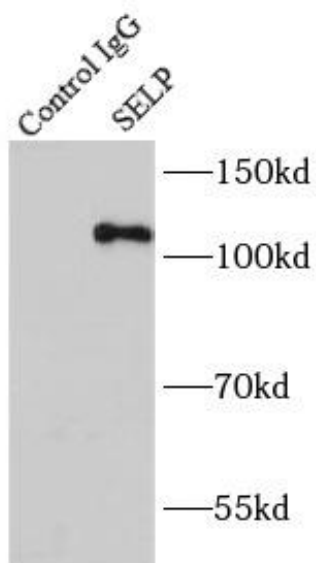
Immunogen:	selectin P
Synonyms:	P-selectin CD62 antigen-like family member P Granule membrane protein 140 (GMP-140) Leukocyte-endothelial cell adhesion molecule 3 (LECAM3) Platelet activation dependent granule-external membrane protein (PADGEM) SELP GMRP GRMP
Observed MW:	105-110 kDa
Uniprot ID :	P16109

Application

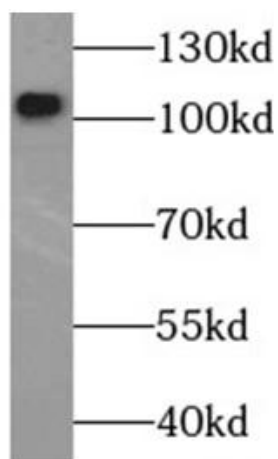
Reactivity:	Human, Rat
Tested Application:	ELISA, IHC, WB, IP
Recommended dilution:	WB: 1:500-1:1000; IP: 1:500-1:1000; IHC: 1:20-1:200
Image:	



Immunohistochemistry of paraffin-embedded human spleen tissue slide using FNab06852(SELPAntibody) at dilution of 1:50



IP Result of anti-SELPAntibody (IP:FNab06852, 5ug; Detection: FNab06852 1:600) with K-562 cells lysate 1760ug.



Jurkat cells were subjected to SDS PAGE followed by western blot with FNab06852(SELPAntibody) at dilution of 1:500