

SELP antibody

Product Information

Catalog No.:	FNab06851
Size:	100µg
Form:	liquid
Purification:	Immunogen affinity purified
Purity:	≥95% as determined by SDS-PAGE
Host:	Rabbit
Clonality:	polyclonal
Clone ID:	None
IsoType:	IgG
Storage:	PBS with 0.02% sodium azide and 50% glycerol pH 7.3, -20°C for 12 months(Avoid repeated freeze / thaw cycles.)

Background

P-selectin, also known as GMP140 or CD62P, is a transmembrane glycoprotein that mediates the interaction of activated endothelial cells or platelets with leukocytes. It is an adhesion molecule involved in the pathogenesis of inflammation, thrombosis, and oncogenesis. P-selectin is stored in the alpha-granules of platelets and Weibel-Palade bodies of endothelial cells. Upon cell activation by agonists, P-selectin is transported rapidly to the cell surface.

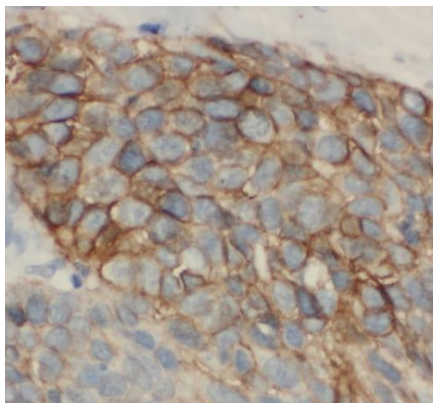
Immunogen information

Immunogen:	selectin P(granule membrane protein 140kDa, antigen CD62)
Synonyms:	P-selectin CD62 antigen-like family member P Granule membrane protein 140 (GMP-140) Leukocyte-endothelial cell adhesion molecule 3 (LECAM3) Platelet activation dependent granule-external membrane protein (PADGEM) SELP GMRP GRMP
Observed MW:	100 kDa, 150kD
Uniprot ID :	P16109

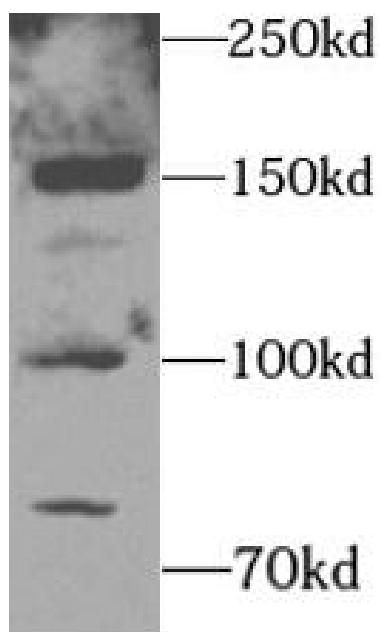
Application

Reactivity:	Human
Tested Application:	ELISA, IHC, WB
Recommended dilution:	WB: 1:500-1:2000; IHC: 1:20-1:200

Image:



Immunohistochemical of paraffin-embedded human lung cancer using FNa06851 (SELP antibody) at dilution of 1:50



Jurkat cells were subjected to SDS PAGE followed by western blot with FNa06851 (P-selectin Antibody) at dilution of 1:1000