

## PSAP antibody

### Product Information

|               |  |
|---------------|--|
| Catalog No.:  | FNab06841  |
| Size:         | 100µg  |
| Form:         | liquid   |
| Purification: | Immunogen affinity purified  |
| Purity:       | ≥95% as determined by SDS-PAGE   |
| Host:         | Rabbit   |
| Clonality:    | polyclonal   |
| Clone ID:     | None   |
| IsoType:      | IgG  |
| Storage:      | PBS with 0.02% sodium azide and 50% glycerol pH 7.3, -20°C for 12 months(Avoid repeated freeze / thaw cycles.) |

### Background

Saposin-A and saposin-C stimulate the hydrolysis of glucosylceramide by beta-glucosylceramidase(EC 3.2.1.45) and galactosylceramide by beta-galactosylceramidase(EC 3.2.1.46). Saposin-C apparently acts by combining with the enzyme and acidic lipid to form an activated complex, rather than by solubilizing the substrate. Saposin-B stimulates the hydrolysis of galacto-cerebroside sulfate by arylsulfatase A(EC 3.1.6.8), GM1 gangliosides by beta-galactosidase(EC 3.2.1.23) and globotriaosylceramide by alpha-galactosidase A(EC 3.2.1.22). Saposin-B forms a solubilizing complex with the substrates of the sphingolipid hydrolases. Saposin-D is a specific sphingomyelin phosphodiesterase activator(EC 3.1.4.12). Prosaposin: Behaves as a myelinotrophic and neurotrophic factor, these effects are mediated by its G-protein-coupled receptors, GPR37 and GPR37L1, undergoing ligand-mediated internalization followed by ERK phosphorylation signaling. Saposins are specific low-molecular mass non-enzymic proteins, they participate in the lysosomal degradation of sphingolipids, which takes place by the sequential action of specific hydrolases.

### Immunogen information

|              |  |
|--------------|--|
| Immunogen:   | prosaposin   |
| Synonyms:    | Prosaposin Proactivator polypeptide Saposin-A Alternative names: Protein A Saposin-B-Val Saposin-B Alternative names: Cerebroside sulfate activator (CSAct) Dispersin Sphingolipid activator protein 1 (SAP-1) Sulfatide/GM1 activator Saposin-C Alternative names: A1 activator Co-beta-glucosidase Glucosylceramidase activator Sphingolipid activator protein 2 (SAP-2) Saposin-D Alternative names: Component C Protein C PSAP GLBA SAP1 |
| Observed MW: | 60 kDa   |

Uniprot ID : P07602

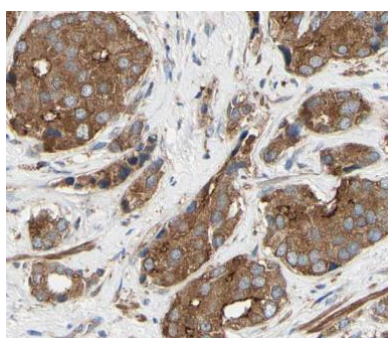
### Application

Reactivity: Human, Mouse, Rat

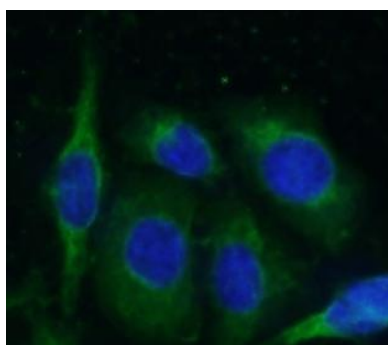
Tested Application: ELISA, IHC, WB, IF

Recommended dilution: WB: 1:500 - 1:1000; IHC: 1:50 - 1:200; IF: 1:50 - 1:200

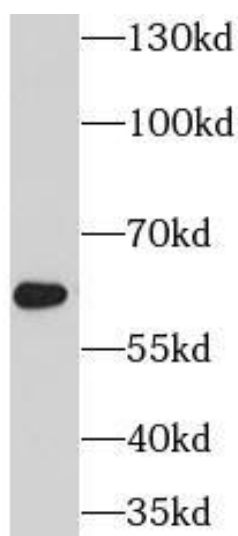
Image:



Immunohistochemistry of paraffin-embedded human prostate cancer using FNab06841(PSAP antibody) at dilution of 1:50



Immunofluorescent analysis of fixed PC-3 cells using 1 FNab06841 (PSAP antibody) at dilution of 1:50 and Alexa Fluor 488-conjugated Goat Anti-Rabbit IgG(H+L)



HepG2 cells were subjected to SDS PAGE followed by western blot with FNab06841(PSAP Antibody) at dilution of 1:600