

## PRICKLE1 antibody

### Product Information

Catalog No.:	FNab06774
Size:	100µg
Form:	liquid
Purification:	Immunogen affinity purified
Purity:	≥95% as determined by SDS-PAGE
Host:	Rabbit
Clonality:	polyclonal
Clone ID:	None
IsoType:	IgG
Storage:	PBS with 0.02% sodium azide and 50% glycerol pH 7.3, -20°C for 12 months(Avoid repeated freeze / thaw cycles.)

### Background

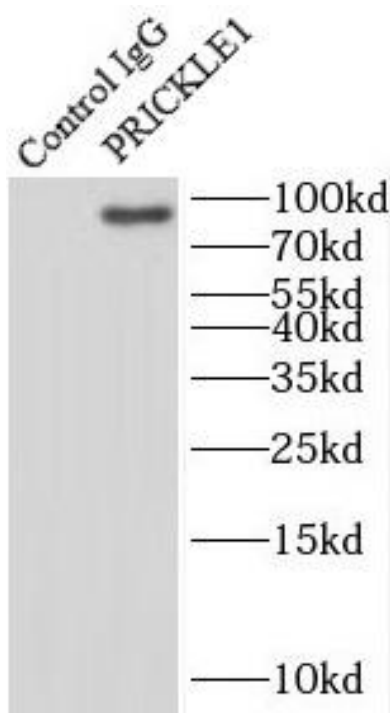
Involved in the planar cell polarity pathway that controls convergent extension during gastrulation and neural tube closure. Convergent extension is a complex morphogenetic process during which cells elongate, move mediolaterally, and intercalate between neighboring cells, leading to convergence toward the mediolateral axis and extension along the anteroposterior axis. Necessary for nuclear localization of REST. May serve as nuclear receptor.

### Immunogen information

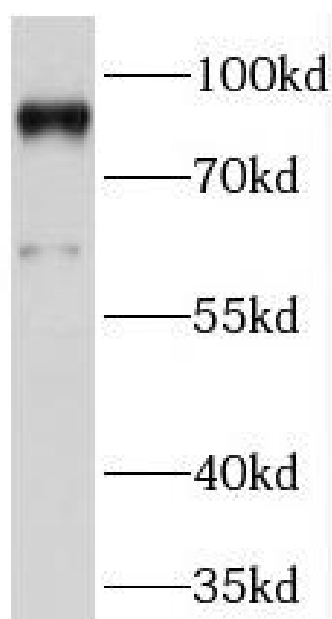
Immunogen:	prickle homolog 1(Drosophila)
Synonyms:	Prickle-like protein 1 REST/NRSF-interacting LIM domain protein 1 PRICKLE1 RILP
Observed MW:	94 kDa, 55-60 kDa
Uniprot ID :	Q96MT3

### Application

Reactivity:	Human, Mouse
Tested Application:	ELISA, WB, IP
Recommended dilution:	WB: 1:500-1:2000; IP: 1:200-1:2000
Image:	



IP Result of anti-PRICKLE1 (IP:FNab06774, 3ug;  
Detection:FNab06774 1:1000) with mouse brain  
tissue lysate 7000ug.



mouse brain tissue were subjected to SDS PAGE  
followed by western blot with  
FNab06774(PRICKLE1 antibody) at dilution of  
1:1000