

PSEN1-Specific antibody

Product Information

| | |
|---------------|--|
| Catalog No.: | FNab06769 |
| Size: | 100µg |
| Form: | liquid |
| Purification: | Immunogen affinity purified |
| Purity: | ≥95% as determined by SDS-PAGE |
| Host: | Rabbit |
| Clonality: | polyclonal |
| Clone ID: | None |
| IsoType: | IgG |
| Storage: | PBS with 0.02% sodium azide and 50% glycerol pH 7.3, -20°C for 12 months(Avoid repeated freeze / thaw cycles.) |

Background

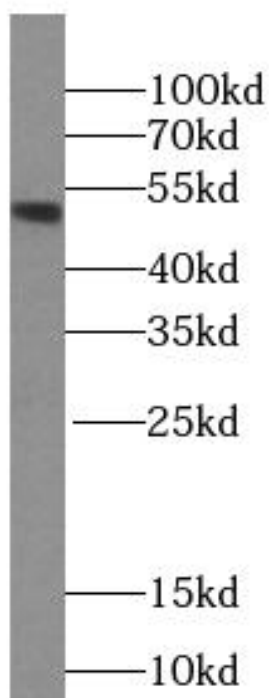
None

Immunogen information

| | |
|--------------|---|
| Immunogen: | presenilin 1 |
| Synonyms: | Presenilin-1 (PS-1) Protein S182 Presenilin-1 NTF subunit Presenilin-1 CTF subunit Presenilin-1 CTF12 (PS1-CTF12) PSEN1 AD3 PS1 PSNL1 |
| Observed MW: | 53 kDa |
| Uniprot ID : | P49768 |

Application

| | |
|-----------------------|-------------------|
| Reactivity: | Human, Mouse, Rat |
| Tested Application: | ELISA, WB |
| Recommended dilution: | WB: 1:500-1:2000 |
| Image: | |



human kidney tissue were subjected to SDS PAGE followed by western blot with FNab06769(Presenilin-1-Specific antibody) at dilution of 1:600