

Pre-IL18 antibody

Product Information

Catalog No.:	FNab06764
Size:	100µg
Form:	liquid
Purification:	Immunogen affinity purified
Purity:	≥95% as determined by SDS-PAGE
Host:	Rabbit
Clonality:	polyclonal
Clone ID:	None
IsoType:	IgG
Storage:	PBS with 0.02% sodium azide and 50% glycerol pH 7.3, -20°C for 12 months(Avoid repeated freeze / thaw cycles.)

Background

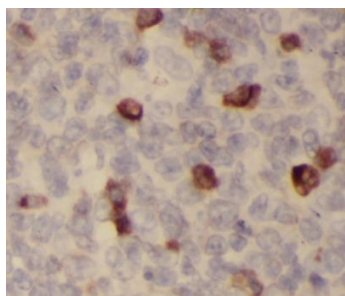
IL18, is a proinflammatory cytokine involved in the development of Th1 cells and in immune response. It can stimulate the NK cells and certain T cells to release interferon gamma which plays an important role in activating the macrophages or other cells. IL18 has been demonstrated to have the potential to enhance Fas ligand-mediated cytotoxicity, which is increased in PE and regulates placental apoptosis. IL18 is synthesized as a 24 kDa precursor and then cleaved into a biologically activate 18 kDa form. This antibody is raised against the full length IL18 precursor, and it recognizes both the pre-IL18 and mature IL18 theoretically.

Immunogen information

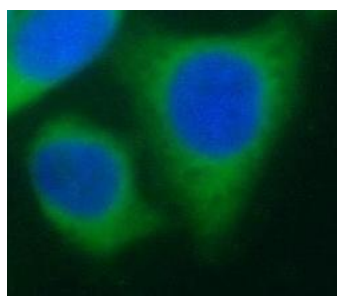
Immunogen:	interleukin 18(interferon-gamma-inducing factor)
Synonyms:	Interleukin-18 (IL-18) Ibctadekin Interferon gamma-inducing factor (IFN-gamma-inducing factor) Interleukin-1 gamma (IL-1 gamma) IL18 IGIF IL1F4
Observed MW:	24 kDa
Uniprot ID :	Q14116

Application

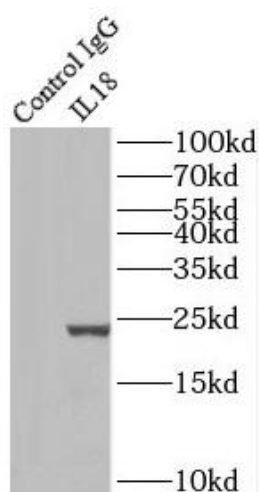
Reactivity:	Human, RAT
Tested Application:	ELISA, WB, IP, IHC, IF
Recommended dilution:	WB: 1:500-1:2000; IP: 1:500-1:5000 ; IHC: 1:50-1:500; IF: 1:10-1:100
Image:	



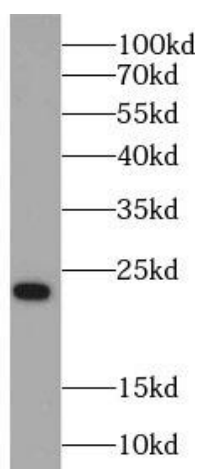
Immunohistochemistry of paraffin-embedded human tonsillitis tissue slide using FNab06764(Pre-IL18 Antibody) at dilution of 1:100



Immunofluorescent analysis of HeLa cells using FNab06764 (Pre-IL18 Antibody) at dilution of 1:25 and Alexa Fluor 488-conjugated AffiniPure Goat Anti-Rabbit IgG(H+L)



IP Result of anti-Pre-IL18 (IP:FNab06764, 3ug; Detection:FNab06764 1:1000) with HeLa cells lysate 5000ug.



HeLa cells were subjected to SDS PAGE followed by western blot with FNab06764(Pre-IL18 antibody) at dilution of 1:1000