

PPP2R2B antibody

Product Information

Catalog No.:	FNab06717
Size:	100µg
Form:	liquid
Purification:	Immunogen affinity purified
Purity:	≥95% as determined by SDS-PAGE
Host:	Rabbit
Clonality:	polyclonal
Clone ID:	None
IsoType:	IgG
Storage:	PBS with 0.02% sodium azide and 50% glycerol pH 7.3, -20°C for 12 months(Avoid repeated freeze / thaw cycles.)

Background

The B regulatory subunit might modulate substrate selectivity and catalytic activity, and also might direct the localization of the catalytic enzyme to a particular subcellular compartment. Within the PP2A holoenzyme complex, isoform 2 is required to promote proapoptotic activity(By similarity). Isoform 2 regulates neuronal survival through the mitochondrial fission and fusion balance(By similarity).

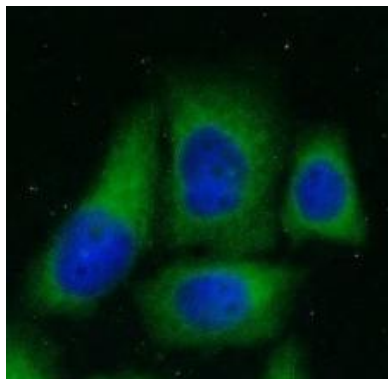
Immunogen information

Immunogen:	protein phosphatase 2(formerly 2A), regulatory subunit B, beta isoform
Synonyms:	Serine/threonine-protein phosphatase 2A 55 kDa regulatory subunit B beta isoform PP2A subunit B isoform B55-beta PP2A subunit B isoform PR55-beta PP2A subunit B isoform R2-beta PP2A subunit B isoform beta PPP2R2B
Observed MW:	52 kDa
Uniprot ID :	Q00005

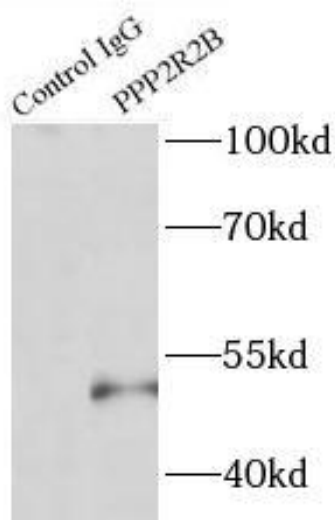
Application

Reactivity:	Human, Mouse, Rat
Tested Application:	ELISA, WB, IF, IP
Recommended dilution:	WB: 1:500-1:1000; IP: 1:500-1:1000; IF: 1:10-1:100

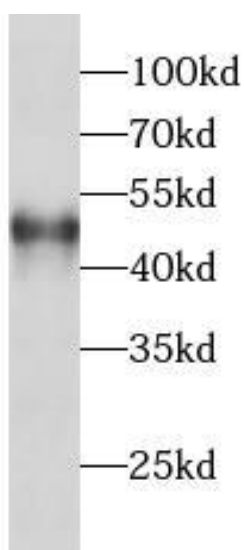
Image:



Immunofluorescent analysis of HeLa cells using FNab06717 (PPP2R2B antibody) at dilution of 1:25 and Alexa Fluor 488-conjugated Goat Anti-Rabbit IgG(H+L)



IP Result of PPP2R2B antibody (IP: FNab06717, 4ug; Detection: FNab06717 1:500) with SH-SY5Y cells lysate 2000ug.



MCF7 cells were subjected to SDS PAGE followed by western blot with FNab06717(PPP2R2B antibody) at dilution of 1:500