

PPP2R2A antibody

Product Information

Catalog No.:	FNab06716
Size:	100µg
Form:	liquid
Purification:	Immunogen affinity purified
Purity:	≥95% as determined by SDS-PAGE
Host:	Rabbit
Clonality:	polyclonal
Clone ID:	None
IsoType:	IgG
Storage:	PBS with 0.02% sodium azide and 50% glycerol pH 7.3, -20°C for 12 months (Avoid repeated freeze / thaw cycles.)

Background

The product of this gene belongs to the phosphatase 2 regulatory subunit B family. Protein phosphatase 2 is one of the four major Ser/Thr phosphatases, and it is implicated in the negative control of cell growth and division. It consists of a common heteromeric core enzyme, which is composed of a catalytic subunit and a constant regulatory subunit, that associates with a variety of regulatory subunits. The B regulatory subunit might modulate substrate selectivity and catalytic activity. This gene encodes an alpha isoform of the regulatory subunit B55 subfamily. Alternatively spliced transcript variants have been described.

Immunogen information

Immunogen:	protein phosphatase 2 (formerly 2A), regulatory subunit B, alpha isoform
Synonyms:	Serine/threonine-protein phosphatase 2A 55 kDa regulatory subunit B alpha isoform PP2A subunit B isoform B55-alpha PP2A subunit B isoform PR55-alpha PP2A subunit B isoform R2-alpha PP2A subunit B isoform alpha PPP2R2A
Observed MW:	52 kDa
Uniprot ID :	P63151

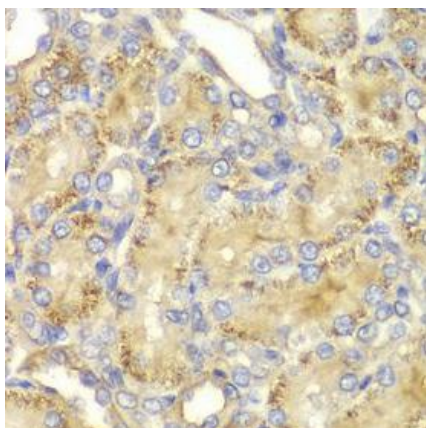
Application

Reactivity:	Human, Mouse, Rat
-------------	-------------------

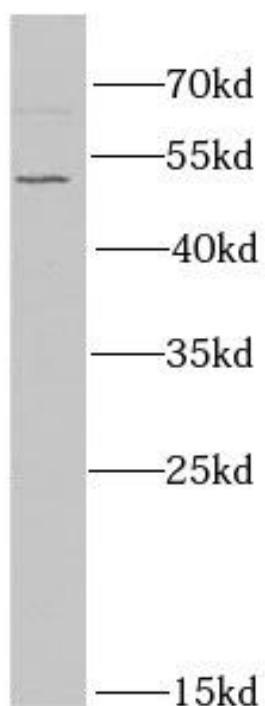
Tested Application: ELISA, IHC, WB

Recommended dilution: WB: 1:500 - 1:2000; IHC: 1:50 - 1:100

Image:



Immunohistochemistry of paraffin-embedded rat kidney using FNab06716(PPP2R2A antibody) at dilution of 1:100



mouse brain tissue were subjected to SDS PAGE followed by western blot with FNab06716(PPP2R2A antibody) at dilution of 1:1000