

PPP2R1B antibody

Product Information

Catalog No.:	FNab06715
Size:	100µg
Form:	liquid
Purification:	Immunogen affinity purified
Purity:	≥95% as determined by SDS-PAGE
Host:	Rabbit
Clonality:	polyclonal
Clone ID:	None
IsoType:	IgG
Storage:	PBS with 0.02% sodium azide and 50% glycerol pH 7.3, -20°C for 12 months (Avoid repeated freeze / thaw cycles.)

Background

This gene encodes a constant regulatory subunit of protein phosphatase 2. Protein phosphatase 2 is one of the four major Ser/Thr phosphatases, and it is implicated in the negative control of cell growth and division. It consists of a common heteromeric core enzyme, which is composed of a catalytic subunit and a constant regulatory subunit, that associates with a variety of regulatory subunits. The constant regulatory subunit A serves as a scaffolding molecule to coordinate the assembly of the catalytic subunit and a variable regulatory B subunit. This gene encodes a beta isoform of the constant regulatory subunit A. Mutations in this gene have been associated with some lung and colon cancers. Alternatively spliced transcript variants have been described.

Immunogen information

Immunogen:	protein phosphatase 2 (formerly 2A), regulatory subunit A, beta isoform
Synonyms:	Serine/threonine-protein phosphatase 2A 65 kDa regulatory subunit A beta isoform PP2A subunit A isoform PR65-beta PP2A subunit A isoform R1-beta PPP2R1B
Observed MW:	65 kDa
Uniprot ID :	P30154

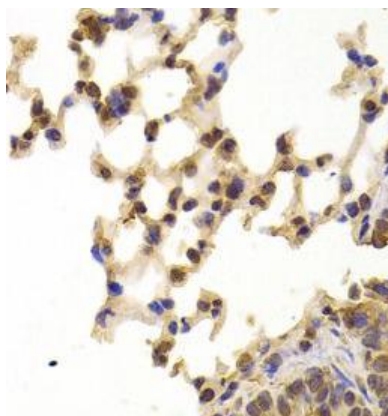
Application

Reactivity:	Human, Mouse, Rat
-------------	-------------------

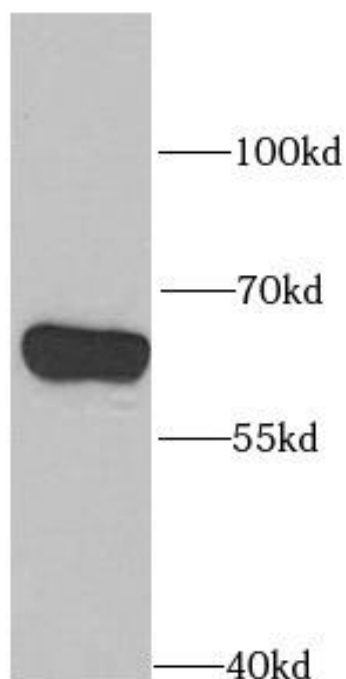
Tested Application: ELISA, IHC, WB

Recommended dilution: WB: 1:500 - 1:2000; IHC: 1:50 - 1:200

Image:



Immunohistochemistry of paraffin-embedded mouse lung using FNab06715(PPP2R1B antibody) at dilution of 1:100



SW480 cells were subjected to SDS PAGE followed by western blot with FNab06715(PPP2R1B antibody) at dilution of 1:1000