

PPP2CB antibody

Product Information

Catalog No.:	FNab06713
Size:	100µg
Form:	liquid
Purification:	Immunogen affinity purified
Purity:	≥95% as determined by SDS-PAGE
Host:	Rabbit
Clonality:	polyclonal
Clone ID:	None
IsoType:	IgG
Storage:	PBS with 0.02% sodium azide and 50% glycerol pH 7.3, -20°C for 12 months(Avoid repeated freeze / thaw cycles.)

Background

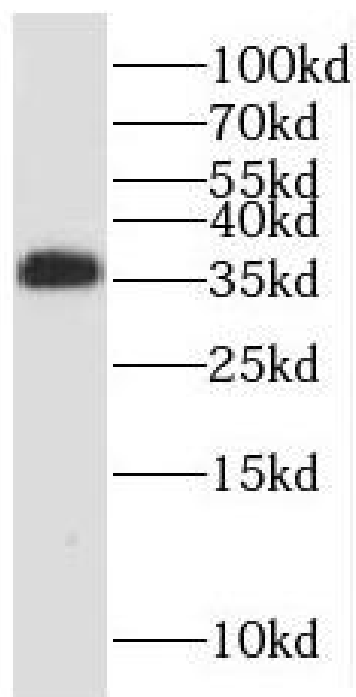
PP2A can modulate the activity of phosphorylase B kinase casein kinase 2, mitogen-stimulated S6 kinase, and MAP-2 kinase.

Immunogen information

Immunogen:	protein phosphatase 2(formerly 2A), catalytic subunit, beta isoform
Synonyms:	Serine/threonine-protein phosphatase 2A catalytic subunit beta isoform (PP2A-beta) PPP2CB
Observed MW:	36 kDa
Uniprot ID :	P62714

Application

Reactivity:	Human, Mouse, Rat
Tested Application:	ELISA, WB
Recommended dilution: WB:	1:500-1:2000
Image:	



mouse lung tissue were subjected to SDS PAGE followed by western blot with FNab06713(PPP2CB antibody) at dilution of 1:400