

## PDP1 antibody

### Product Information

|               |  |
|---------------|--|
| Catalog No.:  | FNab06691  |
| Size:         | 100µg  |
| Form:         | liquid   |
| Purification: | Immunogen affinity purified  |
| Purity:       | ≥95% as determined by SDS-PAGE   |
| Host:         | Rabbit   |
| Clonality:    | polyclonal   |
| Clone ID:     | None   |
| IsoType:      | IgG  |
| Storage:      | PBS with 0.02% sodium azide and 50% glycerol pH 7.3, -20°C for 12 months(Avoid repeated freeze / thaw cycles.) |

### Background

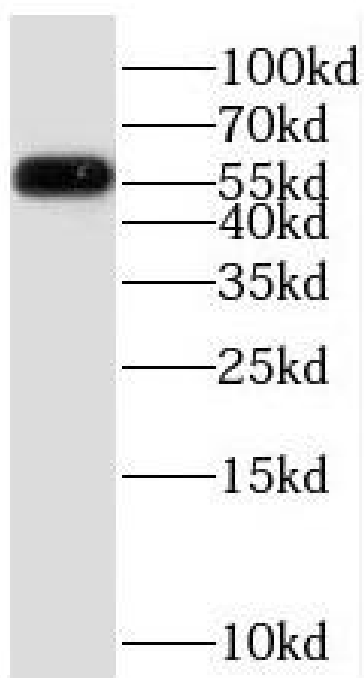
None

### Immunogen information

|              |   |
|--------------|---|
| Immunogen:   | protein phosphatase 2C, magnesium-dependent, catalytic subunit  |
| Synonyms:    | [Pyruvate dehydrogenase [acetyl-transferring]]-phosphatase 1, mitochondrial (PDP 1) Protein phosphatase 2C Pyruvate dehydrogenase phosphatase catalytic subunit 1 (PDPC 1) PDP1 PDP PPM2C |
| Observed MW: | 53-61 kDa   |
| Uniprot ID : | Q9P0J1  |

### Application

|                       |                  |
|-----------------------|------------------|
| Reactivity:           | Human, Mouse     |
| Tested Application:   | ELISA, WB        |
| Recommended dilution: | WB: 1:500-1:2000 |
| Image:                |                  |



PC-3 cells were subjected to SDS PAGE followed by western blot with FNab06691(PPM2C antibody) at dilution of 1:600