

PPM1F antibody

Product Information

Catalog No.:	FNab06686
Size:	100µg
Form:	liquid
Purification:	Immunogen affinity purified
Purity:	≥95% as determined by SDS-PAGE
Host:	Rabbit
Clonality:	polyclonal
Clone ID:	None
IsoType:	IgG
Storage:	PBS with 0.02% sodium azide and 50% glycerol pH 7.3, -20°C for 12 months(Avoid repeated freeze / thaw cycles.)

Background

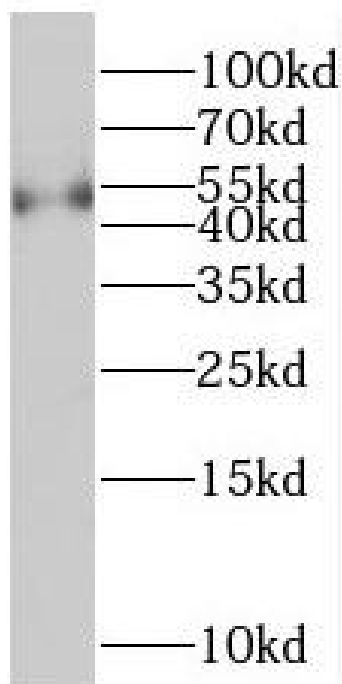
Dephosphorylates and concomitantly deactivates CaM-kinase II activated upon autophosphorylation, and CaM-kinases IV and I activated upon phosphorylation by CaM-kinase kinase. Promotes apoptosis.

Immunogen information

Immunogen:	protein phosphatase 1F(PP2C domain containing)
Synonyms:	Protein phosphatase 1F Ca(2+)/calmodulin-dependent protein kinase phosphatase (CaM-kinase phosphatase, CaMKPase) Partner of PIX 2 Protein fem-2 homolog (hFem-2) PPM1F KIAA0015 POPX2
Observed MW:	50 kDa
Uniprot ID :	P49593

Application

Reactivity:	Human, Mouse, Rat
Tested Application:	ELISA, WB
Recommended dilution:	WB: 1:500-1:2000
Image:	



MCF-7 cells were subjected to SDS PAGE followed by western blot with FNab06686(PPM1F antibody) at dilution of 1:2000