

PPM1B antibody

Product Information

Catalog No.:	FNab06685
Size:	100µg
Form:	liquid
Purification:	Immunogen affinity purified
Purity:	≥95% as determined by SDS-PAGE
Host:	Rabbit
Clonality:	polyclonal
Clone ID:	None
IsoType:	IgG
Storage:	PBS with 0.02% sodium azide and 50% glycerol pH 7.3, -20°C for 12 months(Avoid repeated freeze / thaw cycles.)

Background

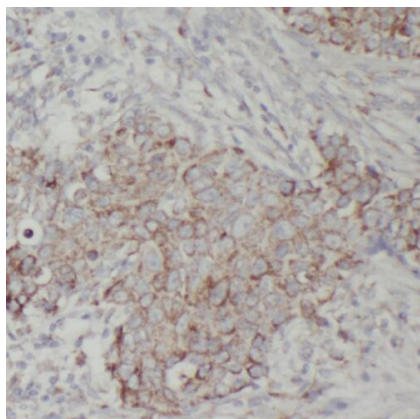
Enzyme with a broad specificity. Dephosphorylates CDK2 and CDK6 in vitro. Dephosphorylates PRKAA1 and PRKAA2. Inhibits TBK1-mediated antiviral signaling by dephosphorylating it at 'Ser-172'. Plays an important role in the termination of TNF-alpha-mediated NF-kappa-B activation through dephosphorylating and inactivating IKBKB/IKKB.

Immunogen information

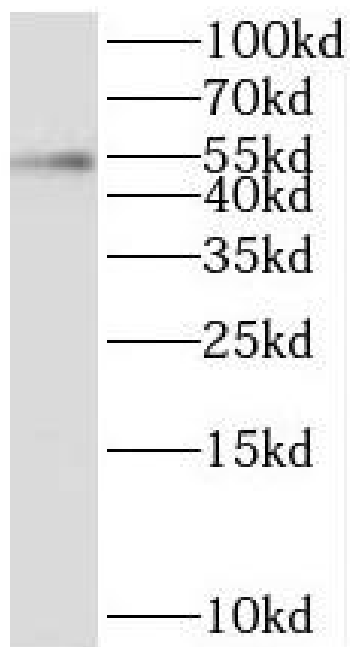
Immunogen:	protein phosphatase 1B(formerly 2C), magnesium-dependent, beta isoform
Synonyms:	Protein phosphatase 1B Protein phosphatase 2C isoform beta (PP2C-beta) PPM1B PP2CB
Observed MW:	50-53 kDa
Uniprot ID :	O75688

Application

Reactivity:	Human, Mouse, Rat
Tested Application:	ELISA, WB, IHC
Recommended dilution:	WB: 1:500-1:2000; IHC: 1:20-1:200
Image:	



Immunohistochemistry of paraffin-embedded human breast cancer tissue slide using FNab06685 (PPM1B Antibody) at dilution of 1:200



MCF7 cells were subjected to SDS PAGE followed by western blot with FNab06685 (PPM1B antibody) at dilution of 1:400