

## PPIG antibody

### Product Information

Catalog No.:	FNab06677
Size:	100µg
Form:	liquid
Purification:	Immunogen affinity purified
Purity:	≥95% as determined by SDS-PAGE
Host:	Rabbit
Clonality:	polyclonal
Clone ID:	None
IsoType:	IgG
Storage:	PBS with 0.02% sodium azide and 50% glycerol pH 7.3, -20°C for 12 months(Avoid repeated freeze / thaw cycles.)

### Background

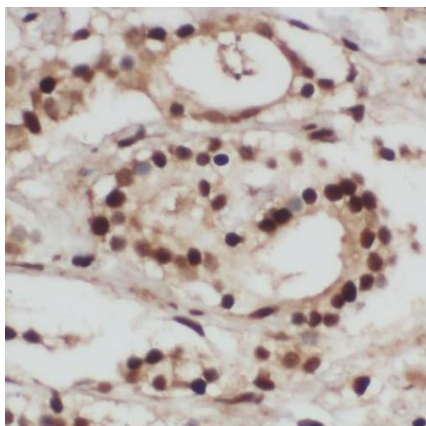
PPIases accelerate the folding of proteins. It catalyzes the cis-trans isomerization of proline imidic peptide bonds in oligopeptides. May be implicated in the folding, transport, and assembly of proteins. May play an important role in the regulation of pre-mRNA splicing.

### Immunogen information

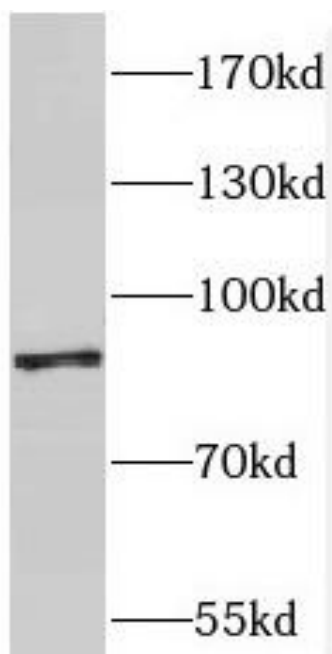
Immunogen:	peptidylprolyl isomerase G(cyclophilin G)
Synonyms:	Peptidyl-prolyl cis-trans isomerase G (PPIase G, Peptidyl-prolyl isomerase G) CASP10 Clk-associating RS-cyclophilin (CARS-Cyp, CARS-cyclophilin, SR-cyclophilin, SR-cyp, SRcyp) Cyclophilin G Rotamase G PPIG
Observed MW:	89 kDa
Uniprot ID :	Q13427

### Application

Reactivity:	Human, Mouse, Rat
Tested Application:	ELISA, WB, IHC, IF
Recommended dilution:	WB: 1:500-1:2000; IHC: 1:20-1:200; IF: 1:20-1:200
Image:	



Immunohistochemistry of paraffin-embedded human prostate cancer using FNab06677(PPIG antibody) at dilution of 1:100



human liver tissue were subjected to SDS PAGE followed by western blot with FNab06677(PPIG antibody) at dilution of 1:400