

## PPIF-Specific antibody

### Product Information

Catalog No.:	FNab06676
Size:	100µg
Form:	liquid
Purification:	Immunogen affinity purified
Purity:	≥95% as determined by SDS-PAGE
Host:	Rabbit
Clonality:	polyclonal
Clone ID:	None
IsoType:	IgG
Storage:	PBS with 0.02% sodium azide and 50% glycerol pH 7.3, -20°C for 12 months(Avoid repeated freeze / thaw cycles.)

### Background

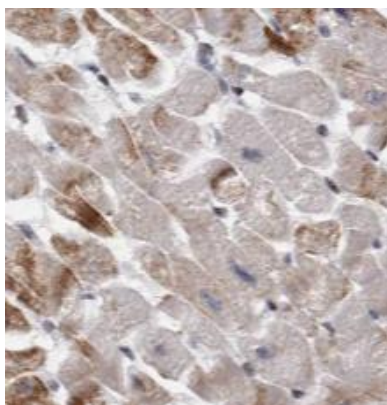
None

### Immunogen information

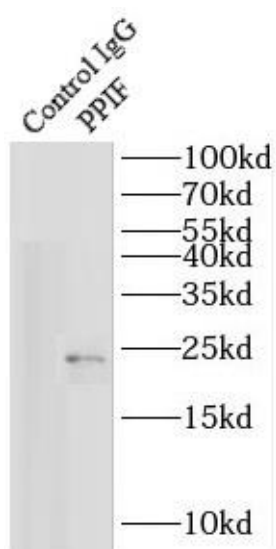
Immunogen:	peptidylprolyl isomerase F
Synonyms:	Peptidyl-prolyl cis-trans isomerase F, mitochondrial (PPIase F) Cyclophilin D (CyP-D, CypD) Cyclophilin F Mitochondrial cyclophilin (CyP-M) Rotamase F PPIF CYP3
Observed MW:	22 kDa
Uniprot ID :	P30405

### Application

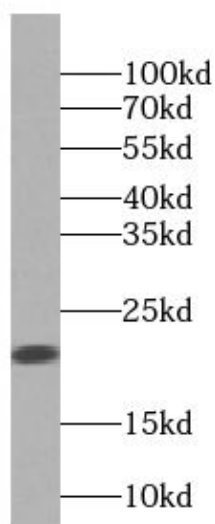
Reactivity:	Human, Mouse, Rat
Tested Application:	ELISA, WB, IHC, IF, IP
Recommended dilution:	WB: 1:500-1:3000; IHC: 1:100-1:400; IF: 1:10-1:100; IP: 1:500-1:2000
Image:	



Immunohistochemistry of paraffin-embedded human heart tissue slide using FNab06676(CYPA Antibody) at dilution of 1:200



IP Result of anti-PPIF-Specific (IP:FNab06676, 3ug; Detection:FNab06676 1:1000) with mouse heart tissue lysate 4000ug.



human heart tissue were subjected to SDS PAGE followed by western blot with FNab06676(PPIF-Specific antibody) at dilution of 1:1000