

PPID antibody

Product Information

Catalog No.:	FNab06675
Size:	100µg
Form:	liquid
Purification:	Immunogen affinity purified
Purity:	≥95% as determined by SDS-PAGE
Host:	Rabbit
Clonality:	polyclonal
Clone ID:	None
IsoType:	IgG
Storage:	PBS with 0.02% sodium azide and 50% glycerol pH 7.3, -20°C for 12 months (Avoid repeated freeze / thaw cycles.)

Background

The protein encoded by this gene is a member of the peptidyl-prolyl cis-trans isomerase (PPIase) family. PPIases catalyze the cis-trans isomerization of proline imidic peptide bonds in oligopeptides and accelerate the folding of proteins. This protein has been shown to possess PPIase activity and, similar to other family members, can bind to the immunosuppressant cyclosporin A.

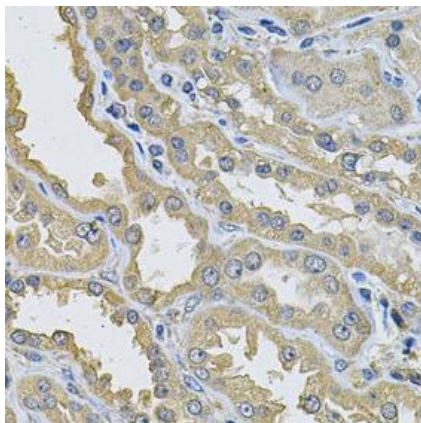
Immunogen information

Immunogen:	peptidylprolyl isomerase D
Synonyms:	Peptidyl-prolyl cis-trans isomerase D (PPIase D) 40 kDa peptidyl-prolyl cis-trans isomerase Cyclophilin-40 (CYP-40) Cyclophilin-related protein Rotamase D PPID CYP40 CYPD
Observed MW:	41 kDa
Uniprot ID :	Q08752

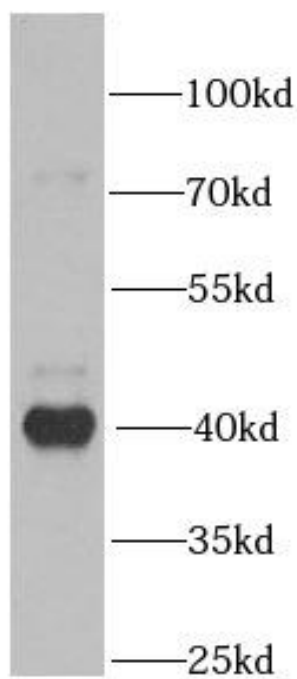
Application

Reactivity:	Human, Mouse, Rat
Tested Application:	ELISA, IHC, WB, IF
Recommended dilution:	WB: 1:500 - 1:2000; IHC: 1:50 - 1:200; IF: 1:50 - 1:100

Image:



Immunohistochemistry of paraffin-embedded human kidney using FNab06675(PPID antibody) at dilution of 1:100



mouse brain tissue were subjected to SDS PAGE followed by western blot with FNab06675(PPID antibody) at dilution of 1:1000