

PPAN antibody

Product Information

Catalog No.:	FNab06658
Size:	100µg
Form:	liquid
Purification:	Immunogen affinity purified
Purity:	≥95% as determined by SDS-PAGE
Host:	Rabbit
Clonality:	polyclonal
Clone ID:	None
IsoType:	IgG
Storage:	PBS with 0.02% sodium azide and 50% glycerol pH 7.3, -20°C for 12 months (Avoid repeated freeze / thaw cycles.)

Background

The protein encoded by this gene is an evolutionarily conserved protein similar to yeast SSF1 as well as to the gene product of the *Drosophila* gene *peter pan* (*ppan*). SSF1 is known to be involved in the second step of mRNA splicing. Both SSF1 and *ppan* are essential for cell growth and proliferation. Exogenous expression of this gene was reported to reduce the anchorage-independent growth of some tumor cells. Read-through transcription of this gene with P2RY11/P2Y(11), an adjacent downstream gene that encodes an ATP receptor, has been found. These read-through transcripts are ubiquitously present and up-regulated during granulocyte differentiation.

Immunogen information

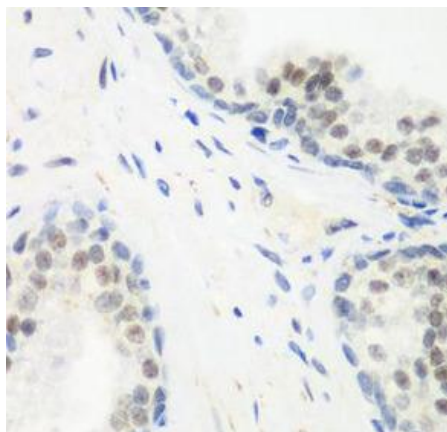
Immunogen:	peter pan homolog (<i>Drosophila</i>)
Synonyms:	Suppressor of SWI4 1 homolog (Ssf-1) Brix domain-containing protein 3 Peter Pan homolog PPAN BXDC3 SSF1
Observed MW:	55 kDa
Uniprot ID :	Q9NQ55

Application

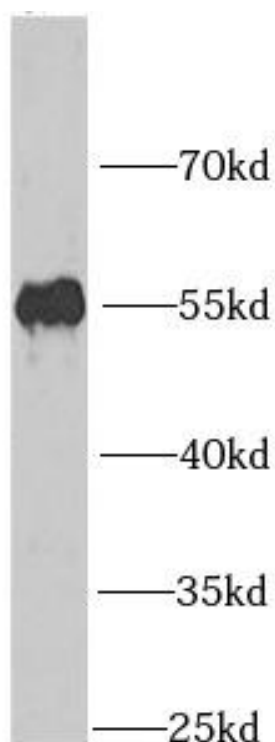
Reactivity:	Human, Mouse
Tested Application:	ELISA, IHC, WB, IF

Recommended dilution: WB: 1:500 - 1:2000; IHC: 1:50 - 1:200; IF: 1:50 - 1:100

Image:



Immunohistochemistry of paraffin-embedded human prostate using FNab06658(PPAN antibody) at dilution of 1:50



mouse heart tissue were subjected to SDS PAGE followed by western blot with FNab06658(PPAN antibody) at dilution of 1:1000